

Threaded Inserts

Threaded Inserts With Locking Element



A Nylon locking element on the external threads secures these inserts in place so they won't back out or loosen from vibration. Use them to repair damaged load-bearing threads in magnesium, aluminum, cast iron, copper, masonite and plastics. To install drill and tap hole. Then turn insert into place with a bolt and nut. Thread class is 2A for exterior and 2B for interior. 18-8 stainless steel inserts have a fused-on nylon patch. Zinc-Plated steel inserts have a nylon pellet built into the threads.

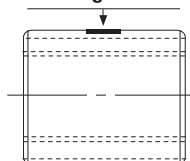
Inch - Zinc - Plated Steel

Internal Thread Size	External Thread/ Tap Size	Insert Length, mm	Drill Size, mm	Number	Price ₪
10-24	3/8" - 16	13/32"	5/16"	OT25 0021	—
10-32	3/8" - 16	13/32"	5/16"	OT25 0068	—
1/4" - 20	7/16" - 14	7/16"	U	OT25 0024	—
1/4" - 28	7/16" - 14	7/16"	U	OT25 0074	—
5/16" - 18	1/2" - 13	31/64"	27/64"	OT25 0027	—
5/16" - 24	1/2" - 13	31/64"	27/64"	OT25 0078	—
3/8" - 16	9/16" - 12	33/64"	31/64"	OT25 0031	—
3/8" - 24	9/16" - 12	33/64"	31/64"	OT25 0082	—
7/16" - 14	5/8" - 11	21/32"	17/32"	OT25 0034	—
1/2" - 13	3/4" - 10	21/32"	21/32"	OT25 0038	—
1/2" - 20	3/4" - 10	21/32"	21/32"	OT25 0086	—
5/8" - 11	7/8" - 9	11/16"	49/64"	OT25 0044	—
5/8" - 11	7/8" - 9	1 1/8"	49/64"	OT25 0045	—
3/4" - 10	1" - 8	25/32"	7/8"	OT25 0051	—
1" - 8	1 3/8" - 12	1 1/4"	1 19/64"	OT25 0054	—

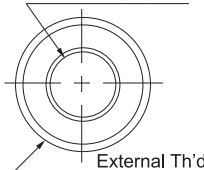
Inch - 18-8 Stainless Steel Inserts

Internal Thread Size	External Thread/ Tap Size	Insert Length, mm	Drill Size, mm	Number	Price ₪
4-40	10-32	7/32"	21	4T16 5415	—
6-32	12-28	1/4"	14	4T16 5419	—
8-32	1/4"-28	9/32"	3	4T16 5423	—
10-24	5/16" - 24	5/16"	I	4T16 5427	—
10-32	5/16" - 24	5/16"	I	4T16 5431	—
1/4" - 20	3/8" - 24	3/8"	Q	4T16 5435	—
1/4" - 28	3/8" - 24	3/8"	Q	4T16 5439	—
5/16" - 18	7/16" - 20	7/16"	25/64"	4T16 5443	—
5/16" - 24	7/16" - 20	7/16"	25/64"	4T16 5447	—
3/8" - 16	1/2" - 20	15/32"	29/64"	4T16 5451	—
3/8" - 24	1/2" - 20	15/32"	29/64"	4T16 5455	—
7/16" - 14	9/16" - 18	17/32"	33/64"	4T16 5459	—
7/16" - 20	9/16" - 18	17/32"	33/64"	4T16 5463	—
1/2" - 13	5/8" - 18	19/32"	37/64"	4T16 5467	—
1/2" - 20	5/8" - 18	19/32"	37/64"	4T16 5471	—
5/8" - 11	3/4" - 16	11/16"	11/16"	4T16 5475	—
5/8" - 18	3/4" - 16	11/16"	11/16"	4T16 5479	—

Locking Element



Internal Th'd



External Th'd

Metric - Steel/Black Oxide, Stainless Steel

Internal Thread 6H (2B)	External Thread 6G (2A)	Length		Black Oxide		Stainless Steel	
		(mm)	(In)	Number	Price ₪	Number	Price ₪
M3X0.5	M6X1.0	6.50	0.256	OT68 5036	—	OT03 8390	—
M4X0.7	M8X1.25	7.50	0.296	OT68 5044	—	OT03 8408	—
M5X0.8	M8X1.25	7.50	0.296	OT68 5051	—	OT03 8416	—
M6X1.0	M10X1.5	10.50	0.414	OT68 5069	—	OT03 8424	—
M8X1.25	M12X1.75	12.50	0.493	OT68 5085	—	OT03 8432	—
M10X1.5	M16X2.0	17.00	0.670	OT68 5101	—	OT03 8440	—
M12X1.75	M16X2.0	17.00	0.670	OT68 5127	—	OT03 8457	—
M14X2.0	M20X2.5	18.00	0.709	OT68 5143	—	—	—
M16X2.0	M24X3.0	20.00	0.788	OT68 5168	—	OT03 8465	—

Just Three Easy Steps to New Threads

- Drill with standard drill countersinks (32° to 37°).
- Tap with standard taps.
- Turn insert into place with a bolt and lock nut

Thread Repair Kits



Restore damaged threads to their original diameter. Helically wound screw thread inserts are 18-8 stainless steel. Kits contain the indicated quantity of helically wound inserts a high-speed screw thread insert (STI) plug tap installation tool and easy-to-follow instructions. Drill hole using bit size shown in table tap using screw thread insert tap. Screw the insert onto the installation tool.

(Continued on following page)

UNC Without Drill Bit

Size	Suggested Drill Bit Size	Length	Inserts Per Kit	Number	Price ₪
2-56	#41	0.129"	10	5G95 0100	—
3-48	7/64"	0.149"	10	5G95 0101	—
4-40	#31	0.168"	10	5G95 0102	—
5-40	#29	0.188"	10	5G95 0103	—
6-32	#25	0.207"	10	5G95 0104	—
8-32	#16	0.246"	10	5G95 0105	—
10-32	#5	0.285"	10	5G95 0106	—
1/4"-20	H	0.375"	10	5G95 0108	—
5/16"-18	Q	0.468"	10	5G95 0109	—
3/8"-16	X	0.563"	10	5G95 0110	—
7/16"-14	29/64"	0.657"	5	5G95 0111	—
1/2"-13	17/32"	0.750"	5	5G95 0112	—
9/16"-12	19/32"	0.843"	5	5G95 0113	—
5/8"-11	21/32"	0.938"	5	5G95 0114	—
3/4"-10	25/32"	1.125"	5	5G95 0115	—
7/8"-9	29/32"	1.313"	5	5G95 0116	—
1"-8	1 1/32"	1.500"	5	5G95 0117	—
1 1/8"-7	1 11/64"	1.688"	5	5G95 0118	—
1 1/4"-7	1 19/64"	1.875"	5	5G95 0119	—
1 1/2"-6	1 35/64"	2.25"	4	5G95 0120	—