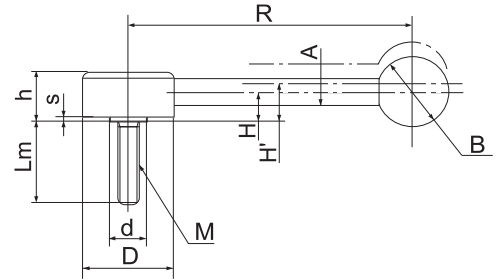


Flat Tension Lever



Material Finished

Lever & Screw : S45C, 43 iron oxide membrane (Black)
SUS303 - Grip (Plastic ball PB) : Phenol resin (Black) - LFMS



| Steel | | | SUS | | | Number Of Teeth | M | Lm | R | H | H' | h | s | A | B | D | d |
|-----------|--------|---------|-----------|---------|---------|-----------------|-----|-------------|-----|------|------|----|---|----|----|----|----|
| Number | Mfr's | Price ₪ | Number | Mfr's | Price ₪ | | | | | | | | | | | | |
| 8G52 5310 | LFM-8 | — | 5G52 5410 | LFMS-8 | — | 22 | M8 | 30 | 100 | 12 | 16 | 19 | 2 | 10 | 25 | 33 | 13 |
| | | — | | | — | | | 40*50 | | | | | | | | | |
| 8G52 5311 | LFM-10 | — | 5G52 5411 | LFMS-10 | — | 26 | M10 | 30 | 130 | 13.5 | 17.5 | 22 | 2 | 12 | 30 | 41 | 19 |
| | | — | | | — | | | 40*50*60 | | | | | | | | | |
| 8G52 5312 | LFM-12 | — | 5G52 5412 | LFMS-12 | — | 26 | M12 | 30*40*50*60 | 130 | 13.5 | 17.5 | 22 | 2 | 12 | 30 | 41 | 19 |
| 8G52 5313 | LFM-16 | — | 5G52 5413 | LFMS-16 | — | 36 | M16 | 40*50*60 | 150 | 17 | 22 | 28 | 2 | 14 | 35 | 45 | 23 |

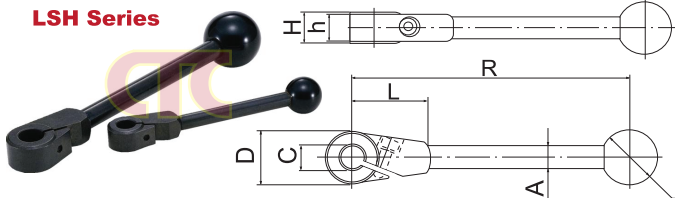
To order please identify material steel or stainless steel and Lm length. Example 8G52 5311 - 40 - Steel.

Split Hub Lever

To order please identify

Material Finished

Hub : Sintered alloy, Handle : S45C, 43 iron oxide membrane (Black). Grip (Plastic ball PB) : Phenol resin (Black).

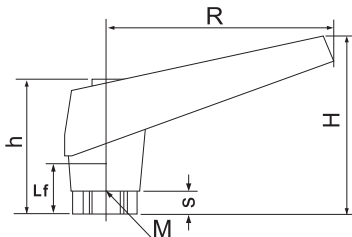


| Number | Mfr's | Price ₪ | D | C | R | L | H | h | A | B |
|-----------|------------|---------|----|----|-------|----|------|----|----|----|
| 5D50 5229 | LSH-24-C10 | — | 24 | 10 | 123.5 | 36 | 15.5 | 13 | 10 | 25 |
| 5D50 5230 | LSH-24-C12 | — | 24 | 12 | 123.5 | 36 | 15.5 | 13 | 10 | 25 |
| 5D50 5231 | LSH-28-C14 | — | 28 | 14 | 151 | 41 | 17.5 | 15 | 12 | 30 |
| 5D50 5232 | LSH-32-C16 | — | 32 | 16 | 187.5 | 45 | 19.5 | 17 | 14 | 35 |

Plastic Clamp Lever Female Screw

Material Finished

Glass fiber reinforced plastic make. Light weight toughness it is superior in corrosion-resistant characteristic. Material finished lever : FRP (Delustering black) Screw : S45C and Trivalent chromate filming.

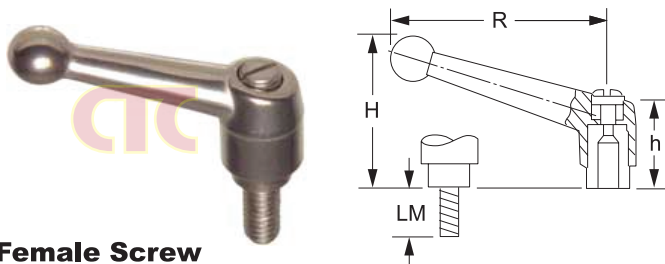


To Order Please Identify

| Number | Mfr's | Price ₪ | Number Of Teeth | M | Lm | R | H | H' | h | s | D | d |
|-----------|-------|---------|-----------------|-----|----|----|----|----|----|---|----|----|
| 8L31 2555 | LF-4 | — | 15 | M4 | 11 | 51 | 41 | 46 | 31 | 5 | 17 | 15 |
| 8L31 2556 | LF-5 | — | 15 | M5 | 11 | 51 | 41 | 46 | 31 | 5 | 17 | 15 |
| 8L31 2557 | LF-6 | — | 16 | M6 | 15 | 68 | 50 | 55 | 35 | 7 | 20 | 16 |
| 8L31 2558 | LF-8 | — | 16 | M8 | 15 | 68 | 50 | 55 | 35 | 7 | 20 | 16 |
| 8L31 2559 | LF-10 | — | 18 | M10 | 19 | 85 | 58 | 63 | 38 | 8 | 24 | 20 |
| 8L31 2560 | LF-12 | — | 18 | M12 | 19 | 85 | 58 | 63 | 38 | 8 | 24 | 20 |

Type 303 Stainless Steel Adjustable Handles

Type 303 stainless steel handle and components are type 303 stainless steel. Ideal for use in food and chemical applications.



Female Screw

| Thread | Thread Dp. | h | R | H | Number | Price ₪ |
|----------|------------|-------|-------|-------|-----------|---------|
| 1/4"-20 | 0.47" | 1.14" | 2.56" | 1.81" | 3J77 0810 | — |
| 5/16"-18 | 0.47" | 1.14" | 2.56" | 1.81" | 3J77 0811 | — |
| 5/16"-18 | 0.55" | 1.47" | 3.15" | 2.28" | 3J77 0812 | — |
| 3/8"-16 | 0.55" | 1.47" | 3.15" | 2.28" | 3J77 0813 | — |
| 1/2"-13 | 0.67" | 1.68" | 3.74" | 2.63" | 3J77 0814 | — |

Male Screw

| Thread | LM | h | R | H | Number | Price ₪ |
|----------|-------|-------|-------|-------|-----------|---------|
| 10-24 | 0.78" | 0.95" | 1.57" | 1.30" | 2J49 5500 | — |
| 10-24 | 1.18" | 0.95" | 1.57" | 1.30" | 2J49 5501 | — |
| 10-32 | 0.59" | 0.95" | 1.57" | 1.30" | 2J49 5502 | — |
| 10-32 | 0.78" | 0.95" | 1.57" | 1.30" | 2J49 5503 | — |
| 10-32 | 1.18" | 0.95" | 1.57" | 1.30" | 2J49 5504 | — |
| 1/4"-20 | 0.59" | 0.95" | 1.57" | 1.30" | 2J49 5505 | — |
| 1/4"-20 | 0.78" | 0.95" | 1.57" | 1.30" | 2J49 5506 | — |
| 1/4"-20 | 1.18" | 0.95" | 1.57" | 1.30" | 2J49 5507 | — |
| 1/4"-20 | 1.57" | 0.95" | 1.57" | 1.30" | 2J49 5508 | — |
| 5/16"-18 | 0.78" | 1.14" | 2.56" | 1.81" | 2J49 5509 | — |
| 5/16"-18 | 1.18" | 1.14" | 2.56" | 1.81" | 2J49 5510 | — |
| 5/16"-18 | 1.57" | 1.14" | 2.56" | 1.81" | 2J49 5511 | — |
| 5/16"-18 | 1.77" | 1.14" | 2.56" | 1.81" | 2J49 5512 | — |
| 3/8"-16 | 0.78" | 1.47" | 3.15" | 2.28" | 2J49 5513 | — |
| 3/8"-16 | 1.18" | 1.47" | 3.15" | 2.28" | 2J49 5514 | — |
| 3/8"-16 | 1.57" | 1.47" | 3.15" | 2.28" | 2J49 5515 | — |
| 3/8"-16 | 1.77" | 1.47" | 3.15" | 2.28" | 2J49 5516 | — |
| 1/2"-13 | 0.78" | 1.68" | 3.74" | 2.63" | 2J49 5517 | — |