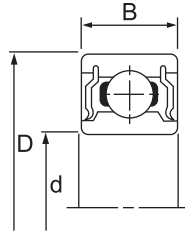


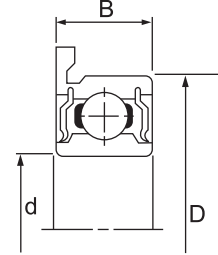
Extra Thin Metric



Flat



Flange

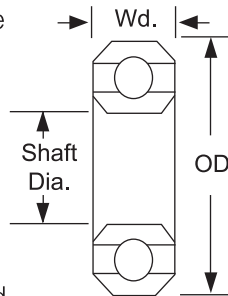


Metric Sizes

Dia. (d)	OD (D)	Load Rating		Max. x 1000 rpm.	Wd. B	Flange Dia.	Flat Open		Flange Open		Flat Shield		Flange Shield	
		Cr (N)	Cor (N)				Number	Price ฿	Number	Price ฿	Number	Price ฿	Number	Price ฿
10	15	855	435	17	3	0.8	1F37 2138	—	1F38 2138	—	—	—	—	—
10	19	1716	840	43	5	1.0	1F37 2139	—	1F38 2139	—	1F39 2139	—	1F40 2139	—
10	22	2695	1273	41	6	1.5	1F37 2140	—	1F38 2140	—	1F39 2140	—	1F40 2140	—
12	18	926	530	15	4	0.8	1F37 2141	—	1F38 2141	—	1F39 2141	—	1F40 2141	—
12	21	1915	1041	39	7	1.5	1F37 2142	—	1F38 2142	—	1F39 2142	—	1F40 2142	—
12	24	2886	1466	36	6	1.5	1F37 2143	—	1F38 2143	—	1F39 2143	—	1F40 2143	—
15	21	937	582	13	4	0.8	1F37 2144	—	1F38 2144	—	1F39 2144	—	1F40 2144	—
15	24	2073	1253	33	7	1.5	1F37 2145	—	1F38 2145	—	1F39 2145	—	1F40 2145	—
15	28	4321	2259	30	7	1.5	1F37 2146	—	1F38 2146	—	1F39 2146	—	1F40 2146	—
17	23	1000	658	11	4	0.8	1F37 2147	—	1F38 2147	—	1F39 2147	—	1F40 2147	—
17	26	2233	1456	30	7	1.5	1F37 2148	—	1F38 2148	—	1F39 2148	—	1F40 2148	—
17	30	4588	2565	38	7	1.5	1F37 2149	—	1F38 2149	—	1F39 2149	—	1F40 2149	—
20	27	1041	729	10	4	0.8	1F37 2150	—	1F38 2150	—	1F39 2150	—	1F40 2150	—
20	37	6381	3682	23	9	2.0	1F37 2151	—	1F38 2151	—	1F39 2151	—	1F40 2151	—
25	32	1091	838	8	4	1.0	1F37 2152	—	1F38 2152	—	1F39 2153	—	—	—
25	37	4303	2932	21	7	1.5	1F37 2153	—	1F38 2153	—	1F39 2154	—	1F40 2154	—
25	42	7001	4540	19	9	2.0	1F37 2154	—	1F38 2154	—	1F39 2155	—	1F40 2155	—
30	42	4538	3402	18	7	1.5	1F37 2156	—	1F38 2156	—	1F39 2156	—	1F40 2156	—
30	47	7242	5003	17	9	2.0	1F37 2157	—	1F38 2157	—	1F39 2157	—	1F40 2157	—
35	47	4729	3821	16	7	1.5	1F37 2159	—	1F38 2159	—	1F39 2159	—	1F40 2159	—
35	55	10900	7818	14	10	2.5	1F37 2160	—	1F38 2160	—	1F39 2160	—	1F40 2160	—
40	52	4923	1478	14	7	1.5	1F37 2162	—	1F38 2162	—	1F39 2162	—	1F40 2162	—

Maintenance - Free Delrin Ball Bearings

Plastic bearings don't require lubrication which means less downtime for maintenance. Delrin adds wear and chemical resistance as well. Compared to conventional metal bearings, these are lighter, quieter, smoother running and more corrosion resistant. All are unshielded unless noted. Temperature range is -40° to 82°C. All balls are nonmagnetic and provide electrical insulation. Glass balls are more corrosion resistant than stainless steel balls. Shielded bearings have an integrated shield on the outer ring which protects the balls from contaminants and improves bearings life. The shield can be removed.



With Stainless Steel Balls		Glass Balls		Shaft Dia. (In.)	OD (In.)	Wd. (In.)	Dynamic Load Cap., lbs.	Max. rpm.
Number	Price ฿	Number	Price ฿					
6E55 0001	—	6C56 0001	—	3/16	1/2	5/32	17	3167
6E55 0002	—	6C56 0002	—	1/4	5/8	0.196	26	2352
6E55 0003	—	6C56 0003	—	1/4	3/4	9/32	26	2352
6E55 0004	—	6C56 0004	—	3/8	7/8	7/32	42	1600
6E55 0005	—	6C56 0005	—	3/8	7/8	9/32	42	1600
6E55 0006	—	6C56 0006	—	3/8	1 1/8	3/8	55	1142
6E55 0007	—	6C56 0007	—	3/8	1 3/8	7/16	69	1069
6E55 0008	—	6C56 0008	—	1/2	1 1/8	1/4	55	1142