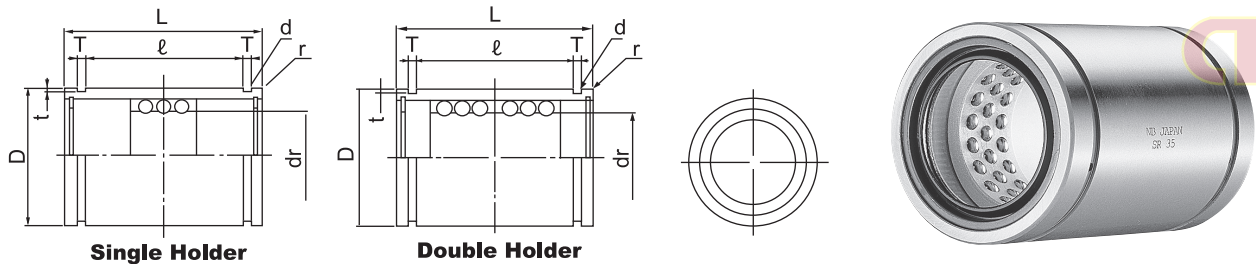


Stroke, Rotary Bush

Stroke Bush



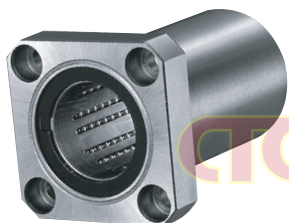
The stroke bush in order the grinding finished is inside the outer ring for the ball to be arranged precisely in the plover, inserts the holder which was processed is designed to be the structure where the ball inside the rubbing pulling out hole of that holder turns smoothly. Because it has entered into the hole which is separated respectively smooth motion can do the ball regardless of the rotation and rectilinear reciprocating motion of the outer ring. However with linear motion the holder just 1/2 of the motion length means to move. Therefore rectilinear portable stroke means to be limited to 2 times that the range where the holder can move inside the barrel. Furthermore when it is usual the fact that you use 80% in largest strokes in the size chart as the portable quantity is recommended.

Single Holder				Double Holder				Dimensions (mm)						
Seals		Both Seals		Seals		Both Seals		dr	D	L	l	ℓ	t	d
Number	Price ₪	Number	Price ₪	Number	Price ₪	Number	Price ₪							
7S09 9810	---	---	---	---	---	---	---	6	12	20	11.3	1.1	0.5	1
7S09 9811	---	8S09 9811	---	9S09 9811	---	---	---	8	15	24	17.1	1.5	0.5	1.2
7S09 9812	---	8S09 9812	---	9S09 9812	---	---	---	10	19	30	22.7	1.5	0.5	1.2
7S09 9813	---	8S09 9813	---	9S09 9813	---	---	---	12	23	32	24.5	1.5	0.5	1.2
7S09 9814	---	8S09 9814	---	9S09 9814	---	---	---	16	28	37	29.1	1.5	0.7	1.3
7S09 9815	---	8S09 9815	---	9S09 9815	---	---	---	20	32	45	35.8	2	0.7	1.5
7S09 9816	---	8S09 9816	---	9S09 9816	---	---	---	25	37	45	35.8	2	0.7	1.6
7S09 9817	---	8S09 9817	---	9S09 9817	---	1S09 8817	---	30	45	65	53.5	2.5	1	2
7S09 9818	---	8S09 9818	---	9S09 9818	---	1S09 8818	---	35	52	70	58.5	2.5	1	2
7S09 9819	---	8S09 9819	---	9S09 9819	---	1S09 8819	---	40	60	80	68.3	2.5	1	2
7S09 9820	---	8S09 9820	---	9S09 9820	---	1S09 8820	---	50	72	100	86.4	3	1	2.5
7S09 9821	---	8S09 9821	---	9S09 9821	---	1S09 8821	---	60	85	100	86.4	3	1	2.5
7S09 9822	---	8S09 9822	---	9S09 9822	---	1S09 8822	---	80	110	100	86	3	1.5	2.5
7S09 9823	---	8S09 9823	---	9S09 9823	---	1S09 8823	---	100	130	100	86	3	1.5	2.5

Sliding Rotary Bush

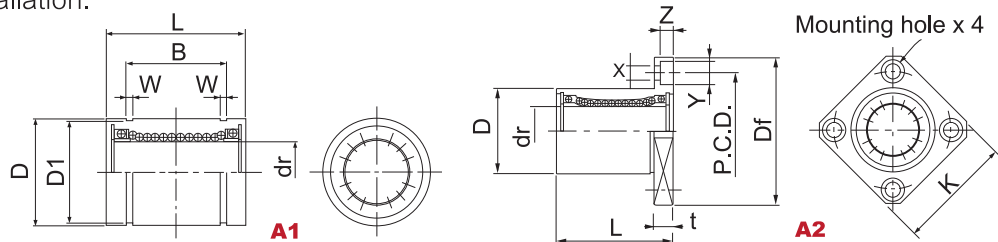


Round Flange (A1)



Square Flange (A2)

Sliding rotary bush we are designed to be the structure where you can obtain the compound movement straight line/revolution simultaneously by comparison with the former method of jointly using the bearing for linear motion and the bearing for revolution substantial compact conversion is possible. For size 9 size of Ø6~Ø30mm. In addition 3 series of standard type angular collar head type and unit type can be standardized can correspond to various installation.



Round Flange (A1)		Square Flange (A2)		Dimensions (mm)							
Number	Price ₪	Number	Price ₪	dr	D	L	Df	K	t	P.C.D.	B
1S07 9110	---	2S07 9110	---	6	12	19	28	22	5	20	13.5
1S07 9111	---	2S07 9111	---	8	15	24	32	25	5	24	17.5
1S07 9112	---	2S07 9112	---	10	19	29	40	30	6	29	22
1S07 9113	---	2S07 9113	---	12	21	30	42	32	6	32	23
1S07 9114	---	2S07 9114	---	13	23	32	43	34	6	33	23