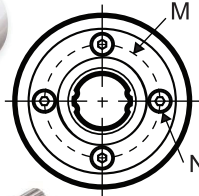


Ball Bearings

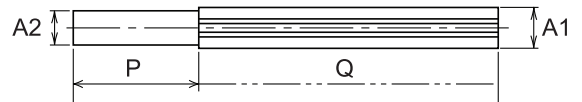
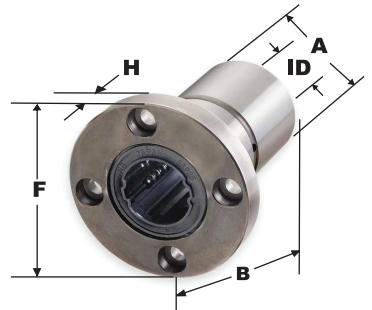
Rotary Ball Bearings and Spline Shafts

Use a ball bearing and spline shaft together to transmit rotary torque while allowing the bearing to move linearly along the shaft. Also called ball splines these ball bearings and spline shafts offer low friction and low backlash. Torque capacity. is the maximum rotational load a bearing can withstand without deforming. Bearings have a fixed - alignment desingn and are for application with no shaft misalignment. Mount bearings in any position without affecting their load capacity. Shell and balls are steel. Max. Temp. is 80°C. Use these closed bearings with end - supported spline shafts.

Standard Ball Bearing



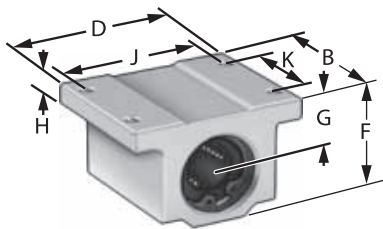
Flanged Ball Bearing



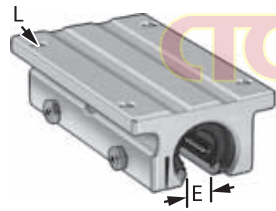
Spline Shaft

Bearings (Dimensions In mm)													Spline Shafts					
Normal DIA.	Bearing ID	OD (A)	O'all Lg. (B)	Torque Cap., in.-lbs.	Standard		Flanged Uses Bolt						OD ₁ , mm (A1)	OD ₂ , mm (A2)	(P), mm	(Q), mm	Number	Price ₱
					Number	Price ₱	(F)	(H)	(M)	Size (N)	Number	Price ₱						
8	8	16	25	18	4N14 5093	—	32	5	24	M3	5N14 5093	—	8	—	—	150	6N14 5093	—
10	10	21	33	38	4N14 5094	—	42	6	32	M4	5N14 5094	—	10	—	—	200	6N14 5094	—
20	18.2	32	60	734	4N14 5095	—	51	7	40	M4	5N14 5095	—	18.2	15	150	200	6N14 5095	—
25	23	37	70	1430	4N14 5096	—	60	9	47	M5	5N14 5096	—	23	20	150	200	6N14 5096	—
30	28	45	80	2250	4N14 5097	—	70	10	54	M6	5N14 5097	—	28	25	150	300	6N14 5097	—
40	37.4	60	100	5630	4N14 5098	—	90	14	72	M8	5N14 5098	—	37.4	30	150	400	6N14 5098	—

Pillow - Block Linear Ball Bearings



Single Length, Closed Bearing



Double Length, Open Bearing

Conveniently mounted in an aluminum pillow block these bearing save you time and installion costs. Bearings are smooth running self - aliging and handle up to 1° (Unless Noted) of shaft misalignment in any direction. They have end seals to keep lubricants in and dirt out. The height (G) Dimension tolerance is ± .0012". Mount bearings in any position without affecting their load capacity. Bearings are replaceable. Shell is acetal (Unless Noted) Balls are steel. Maximum temperature is 80° C.

Bearing ID	Dynamic Load Cap., lbs.	O'all Lg. (B)	O'all Wd. (D)	Wd. (E)	O'all Ht. (F)	Ht. (G)	Flange Thick (H)	Mounting Holes				Number	Price ₱
								Center-to-Center		Dia. (L)	No. of Holes		
								(J)	(K)				
Single Length (Closed Bearings)													
1/2"	230	1 11/16"	2"	—	1 1/4"	11/16"	1/4"	1 11/16"	1"	5/32"	4	6E55 7402	—
5/8"	400	1 15/16"	2 1/2"	—	1 5/8"	7/8"	9/32"	2 1/8"	1 1/8"	3/16"	4	6E55 7403	—
3/4"	470	2 1/16"	2 3/4"	—	1 3/4"	15/16"	5/16"	2 3/8"	1 1/4"	3/16"	4	6E55 7404	—
1"	850	2 13/16"	3 1/4"	—	2 3/16"	1 3/16"	3/8"	2 7/8"	1 3/4"	7/32"	4	6E55 7405	—
Double Length (Closed Bearings)													
1/2"	370	3 1/2"	2"	—	1 1/4"	11/16"	1/4"	1 11/16"	2 1/2"	5/32"	4	6E55 7407	—
5/8"	640	4"	2 1/2"	—	1 5/8"	7/8"	9/32"	2 1/8"	3"	3/16"	4	6E55 7408	—
3/4"	750	4 1/2"	2 3/4"	—	1 3/4"	15/16"	5/16"	2 3/8"	3 1/2"	3/16"	4	6E55 7409	—
1"	1360	6"	3 1/4"	—	2 3/16"	1 3/16"	3/8"	2 7/8"	4 1/2"	7/32"	4	6E55 7410	—
Single Length (Open Bearings)													
1/2"	230	1 1/2"	2"	1/4"	1 3/32"	11/16"	1/4"	1 11/16"	1"	5/32"	4	6E55 7411	—
5/8"	400	1 3/4"	2 1/2"	5/16"	1 13/32"	7/8"	9/32"	2 1/8"	1 1/8"	3/16"	4	6E55 7412	—
3/4"	470	1 7/8"	2 3/4"	3/8"	1 17/32"	15/16"	5/16"	2 3/8"	1 1/4"	3/16"	4	6E55 7413	—
1"	850	2 5/8"	3 1/4"	1/2"	1 31/32"	1 3/16"	3/8"	2 7/8"	1 3/4"	7/32"	4	6E55 7414	—
Double Length (Open Bearings)													
5/8"	640	4"	2 1/2"	5/16"	1 13/32"	7/8"	9/32"	2 1/8"	3"	3/16"	4	6E55 7416	—
3/4"	750	4 1/2"	2 3/4"	3/8"	1 17/32"	15/16"	5/16"	2 3/8"	3 1/2"	3/16"	4	6E55 7417	—
1"	1360	6"	3 1/4"	1/2"	1 31/32"	1 3/16"	3/8"	2 7/8"	4 1/2"	7/32"	4	6E55 7418	—