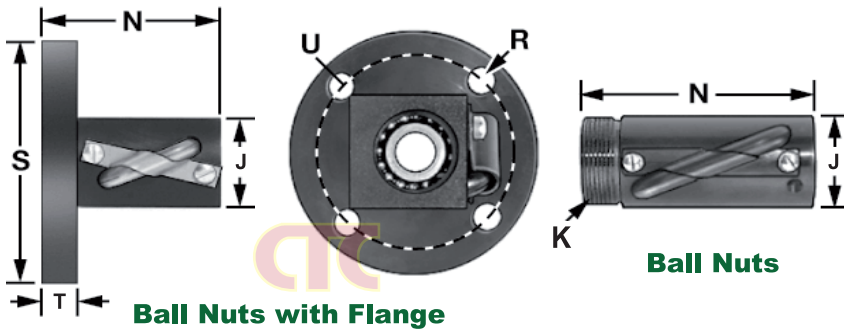


Ball Nut & Ball Screws

Ball Nuts and Ball Nuts with Flange



All of these ball nuts are made of heat-treated alloy steel with a black-oxide finish. The maximum play between the screw and the nut is 0.015". Rockwell hardness is C56. Temperature range is -53° to +148° C.

For use with ball screws that have the same screw diameter and travel distance per turn. Load capacities are based on using a ball screw and a ball nut together.

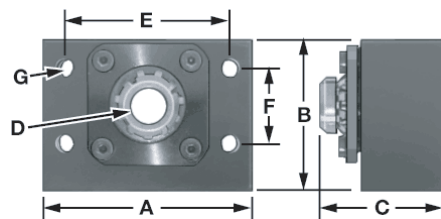
Screw Dia.	Screw Lead	Lg. (N)	(J)	Ball Nuts			Ball Nuts with Flange					
				Thread (K)	Number	Price ₪	Dia. (R)	Dia. (S)	(T)	Bolt Circle (U)	Number	Price ₪
Round Ball Nuts												
3/8"	1/8"	1"	3/4" Dia.	0.664"-32	5906 K140	—	0.177"	1 39/64"	0.27"	1.240"	5906 K440	—
3/4"	13/64"	2 57/64"	1 5/16" Dia.	1.173"-18	5906 K100	—	0.281"	2 39/64"	0.53"	2.090"	5906 K300	—
3/4"	1/2"	3"	1 5/16" Dia.	1 1/4"-18	5906 K420	—	0.281"	2 5/8"	0.53"	2.090"	5906 K790	—
1"	1/2"	3 1/8"	1 5/8" Dia.	1 9/16"-18	5906 K430	—	0.266"	3 1/4"	0.63"	2.750"	5906 K810	—
1 1/2"	1/4"	2 7/8"	2 3/32" Dia.	1 31/32"-18	5906 K180	—	0.397"	4 13/64"	0.52"	3.440"	5906 K480	—
1 1/2"	1/2"	5 19/32"	2 5/8" Dia.	2.36"-18	5906 K340	—	0.531"	4 21/32"	0.780"	3.875"	5906 K350	—
2 1/4"	1/2"	6 11/16"	3 3/8" Dia.	3.137"-12	5906 K190	—	0.656"	5 3/8"	1.582"	4.375"	5906 K490	—
2 1/4"	1"	6 23/32"	3 3/8" Dia.	3.137"-12	5906 K770	—	0.656"	5 3/8"	1.582"	4.375"	5906 K850	—
Square Ball Nuts												
1/2"	1/2"	1 7/8"	3/4" x 1"	15/16"-16	5906 K150	—	0.266"	2 39/64"	0.53"	2.09"	5906 K450	—
5/8"	13/64"	1 23/32"	1" x 1"	15/16"-16	5906 K160	—	0.266"	2 39/64"	0.53"	2.09"	5906 K460	—
1"	1/4"	2 11/32"	1 1/2" x 1 1/2"	1 9/16"-18	5906 K170	—	0.266"	3 1/4"	0.63"	2.75"	5906 K470	—
1"	1"	3"	1 1/2" x 1 1/2"	1 9/16"-18	5906 K740	—	0.266"	3 1/4"	0.63"	2.75"	5906 K820	—
1 1/2"	1"	3 5/8"	2 1/4" x 2 1/4"	2 1/4"-20	5906 K167	—	0.531"	4 15/16"	1.02"	4.125"	5906 K840	—

Ball Screws and End Block



Ball Screws

Ball Screws are made of induction-hardened AISI 4150 alloy steel with a polished and oiled finish for smoother operation. They have right-hand threads. Screw lead accuracy is ±0.004" per foot. Rockwell hardness is C56. Temperature range is -53° to 148°C. Use only with ball nuts that have the same diameter and screw lead.



End Mounting Blocks

Ball Nuts are made of heat-treated alloy steel with a black-oxide finish. Rockwell hardness is C56. Use only with ball screws that have the same diameter and screw lead. Temperature range is -53° to 148°C. Choose ball nuts with or without flanged end.

End Mounting Blocks support a ball screw with angular bearings that eliminate wobble. Made of steel. Each includes bearings, replaceable seals, a locknut and a washer. Note: Ball screws need to be machined before installing in an end mounting block.

Ball Screws

Screw Dia.	Screw Lead	Load Cap., lbs.	Max. Screw Lg.	Number	Price ₪
1/2"	1/2"	786	48"	5966 2K25	—
5/8"	13/64"	778	72"	5966 2K26	—
3/4"	13/64"	1,100	72"	5966 2K13	—
3/4"	1/2"	3,263	72"	5966 2K22	—
1"	1/4"	1,612	192"	5966 2K27	—
1"	1/2"	3,890	192"	5966 2K23	—
1"	1"	2,142	192"	5966 2K31	—
1 1/2"	1/4"	4,198	240"	5966 2K28	—
1 1/2"	1/2"	12,320	144"	5966 2K76	—
1 1/2"	1"	7,560	240"	5966 2K39	—
2 1/4"	1/2"	21,306	240"	5966 2K29	—

End Mounting Blocks

(A)	(B)	(C)	Dia. (D)	Ctr.-to-Ctr. (E)	Ctr.-to-Ctr. (F)	Dia. (G)	Number	Price ₪
2 3/4"	2"	1 3/8"	23/64"	2"	1 3/8"	0.281"	6075 5K12	—
3"	1 7/8"	1 11/16"	15/32"	2 1/4"	1 1/8"	0.281"	6075 5K13	—
3 1/2"	2 1/8"	1 27/32"	19/32"	2 1/2"	1 3/8"	0.281"	6075 5K14	—
3 1/2"	2 1/8"	1 27/32"	19/32"	2 1/2"	1 3/8"	0.281"	6075 5K15	—
4 1/2"	2 3/4"	2 21/64"	25/32"	3 1/4"	1 3/4"	0.469"	6075 5K16	—
4 1/2"	2 3/4"	2 21/64"	25/32"	3 1/4"	1 3/4"	0.469"	6075 5K17	—
4 1/2"	2 3/4"	2 21/64"	25/32"	3 1/4"	1 3/4"	0.469"	6075 5K18	—
6"	3 3/8"	2 35/64"	63/64"	4 1/4"	2"	0.656"	6075 5K19	—
6 1/2"	3 5/8"	2 11/16"	1 3/16"	4 3/4"	2"	0.656"	6075 5K20	—
6 1/2"	3 5/8"	2 11/16"	1 3/16"	4 3/4"	2"	0.656"	6075 5K21	—
8 1/2"	5 5/8"	4 5/32"	1 25/32"	6 5/8"	3 5/8"	0.812"	6075 5K22	—