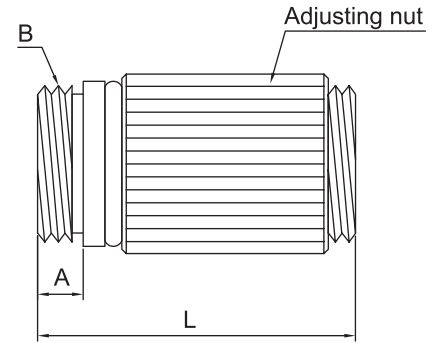
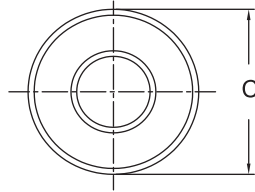


Compact Preload Adjustable Style Component Nut



Easily Adjusted By Turning Adjusting Nut For Desired Preload.

Material

Nut : Turcite X

Sleeve : Anodized aluminum "O" ring : Buna N

Specifications

Temperature range : Min. 0 – C, Max. 82 – C.

Max. Speed (Unlubricated) : 200 ft./ min.

Material : Turcite X (Acetal - Teflon and Silicon filled).

These series anti - Backlash nuts are designed to be adjusted. An "O" ring Spacer is placed between the two halves of the nut. The back haft of the nut is adjusted by simply turning the outside body until desired preload is obtained. The "O" ring provides for minor screw thread deviations.



Inch size

Major Dia. (In.)	Lead (In.)	AB Nut Dimensions (In.)				Flang No.	Max. Dynamic Load (lbs.)	Torque to Raise 1 lb. Load (Oz.-In.)	Number	Price ₱	
		D	L		A						B
			Max.	Min.							
3/16	0.050	0.62	1.34	1.12	3/16	9/16-18	9F82 7753	35	.40	2N20 7446	—
1/4	0.050	0.62	1.34	1.17	3/16	9/16-18	9F82 7753	45	.40	2N20 7447	—
1/4	0.0625	0.62	1.34	1.17	3/16	9/16-18	9F82 7753	45	.42	2N20 7448	—
5/16	0.500	0.75	1.7	1.4	1/4	5/8-18	9F82 7751	60	1.8	2N20 7449	—
3/8	0.050	0.75	1.7	1.4	1/4	5/8-18	9F82 7751	85	.60	2N20 7450	—
3/8	0.0625	0.75	1.7	1.4	1/4	5/8-18	9F82 7751	85	.58	2N20 7451	—
3/8	0.100	0.75	1.7	1.4	1/4	5/8-18	9F82 7751	85	.64	2N80 7452	—
3/8	0.125	0.75	1.7	1.4	1/4	5/8-18	9F82 7751	85	.70	2N20 7453	—
3/8	0.200	0.75	1.7	1.4	1/4	5/8-18	9F82 7751	85	.92	2N20 7454	—
3/8	0.250	0.75	1.7	1.4	1/4	5/8-18	9F82 7751	85	1.1	2N20 7455	—
3/8	0.500	0.75	1.7	1.4	1/4	5/8-18	9F82 7751	85	1.8	2N20 7456	—
3/8	1.000	0.75	1.7	1.4	1/4	5/8-18	9F82 7751	85	3.5	2N20 7457	—
3/8	1.250	0.75	1.7	1.4	1/4	5/8-18	9F82 7751	85	4.2	2N20 7458	—
7/16	0.250	1.00	2.00	1.7	5/16	15/16-16	9F82 7752	130	1.1	2N20 7459	—
7/16	0.500	1.00	2.00	1.7	5/16	15/16-16	9F82 7752	130	1.9	2N20 7460	—
1/2	0.100	1.00	2.00	1.7	5/16	15/16-16	9F82 7752	130	.80	2N20 7461	—
1/2	0.200	1.00	2.00	1.7	5/16	15/16-16	9F82 7752	130	1.1	2N20 7462	—
5/8	0.100	1.00	2.00	1.7	5/16	15/16-16	9F82 7752	130	.80	2N20 7463	—
5/8	0.125	1.00	2.00	1.7	5/16	15/16-16	9F82 7752	130	1.0	2N20 7464	—
5/8	0.200	1.00	2.00	1.7	5/16	15/16-16	9F82 7752	130	1.1	2N20 7465	—

Metric Size

Major Dia. (mm)	Lead (mm)	AB Nut Dimensions (mm)				Flang No.	Max. Dynamic Load (kg.)	Torque to Raise 1 kg (NM)	Number	Price ₱	
		D	L		A						B
			Max.	Min.							
4.0	1.0	15	30	25	5.0	M12 X 1.5	9F82 7754	15	.004	2N20 7466	—
8.0	2.0	15	30	25	5.0	M12 X 1.5	9F82 7754	25	.009	2N20 7467	—
10.0	2.0	25	50	43	6.4	M20 X 1.5	9F82 7755	40	.013	2N20 7468	—
10.0	6.0	25	50	43	6.4	M20 X 1.5	9F82 7755	40	.012	2N20 7469	—
14.0	4.0	25	50	43	6.4	M20 X 1.5	9F82 7755	80	.015	2N20 7470	—

* Torque figures are based on three factors : load, preload and efficiency.

Give us your e-mail address and we'll give you web-only deals on virtually everything we sell. Just click on the "Promotions" button at component.co.th

