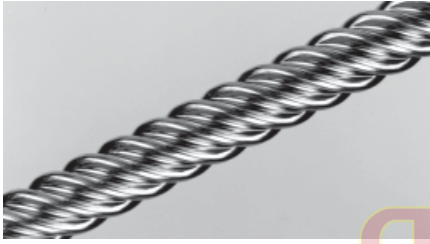


Lead Screws & Nuts

Precision PS Style Lead Screws



Features

- Precision rolled.
- Lead screw accuracy of .0006 in./ in. (mm/mm).
- Straightness tolerance of .003 in/ ft.
- Screws have burnished finish of better than 16 micro - inch due to the rolling process.

Material

Material : 303 Stainless steel
 Repeatability : .000050 Inches
 System (Lead screw and nut)

Specification

- Operating temperature range : Max. 0-93-C.
- Coefficient of friction (Nut to screw) : .08 Static, .15 Dynamic (.09 When TFE Coated).

Inch Size

Screw Dia. (In.)	Lead (In.)	Root Dia. In. (mm)	Efficiency EF (%)	Standard Lg. (12")		Standard Lg. (36")	
				Number	Price \$	Number	Price \$
1/4	0.062	0.170	52	0P22 8750	—	0P23 8750	—
1/4	0.250	0.168	79	0P22 8751	—	0P23 8751	—
1/4	1.000	0.170	84	0P22 8752	—	0P23 8752	—
1/4	1.5mm	0.172 (4.37)	51	0P22 8753	—	0P23 8753	—
3/8	0.100	0.266	53	0P22 8754	—	0P23 8754	—
3/8	0.200	0.266	69	0P22 8755	—	0P23 8755	—
3/8	0.300	0.255	76	0P22 8756	—	0P23 8756	—
3/8	0.500	0.265	81	0P22 8757	—	0P23 8757	—
3/8	1.000	0.254	84	0P22 8758	—	0P23 8758	—
3/8	1.200	0.254	84	0P22 8759	—	0P23 8759	—
3/8	2mm	0.254 (6.45)	47	0P22 8760	—	0P23 8760	—
3/8	5mm	0.266 (6.76)	69	0P22 8761	—	0P23 8761	—

Screw Dia. (In.)	Lead (In.)	Root Dia. In. (mm)	Efficiency EF (%)	Standard Lg. (24")		Standard Lg. (48")	
				Number	Price \$	Number	Price \$
7/16	0.250	0.325	70	0P22 8762	—	0P23 8762	—
7/16	0.500	0.328	80	0P22 8763	—	0P23 8763	—
7/16	3mm	0.363 (9.22)	52	0P22 8764	—	0P23 8764	—
7/16	5mm	0.313 (7.95)	65	0P22 8765	—	0P23 8765	—
1/2	0.050	0.433	28	0P22 8766	—	0P23 8766	—
1/2	0.100	0.364	46	0P22 8767	—	0P23 8767	—
1/2	0.200	0.366	63	0P22 8768	—	0P23 8768	—
1/2	0.500	0.352	79	0P22 8769	—	0P23 8769	—
1/2	1.000	0.372	84	0P22 8770	—	0P23 8770	—
3/4	1.000	0.619	81	0P22 8771	—	0P23 8771	—
3/4	2.000	0.611	84	0P22 8772	—	0P23 8772	—



Standard Mounting Flanges

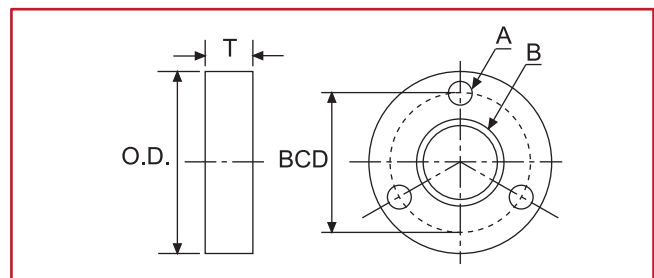
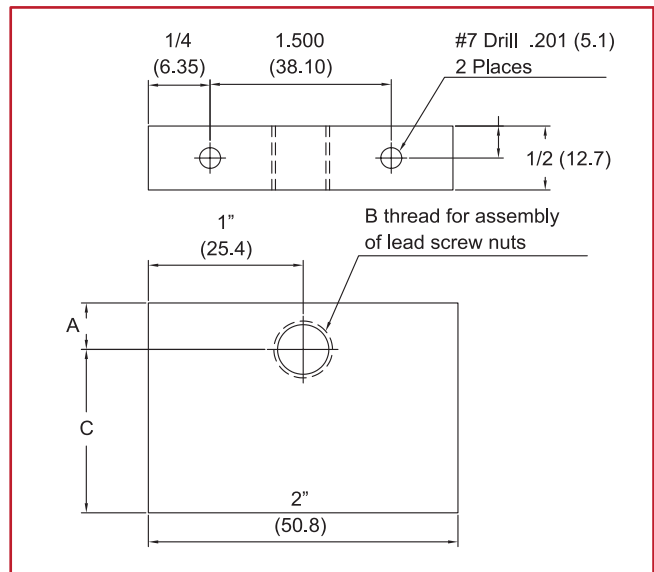
Inch Size				
A±.002	B Thread	C±.002	Number	Price \$
.375	5/8-18	.625	7L10 0011	—
.562	15/16-16	.812	7L10 0021	—
.375	9/16-18	.625	7L10 0031	—
Metric Size				
A	B Thread	C	Number	Price \$
9.53	M12 X 1.5	15.88	7L10 0041	—
14.27	M20 X 1.5	20.62	7L10 0051	—

Material : Aluminum alloy (6061)

Finish : Black anodized

Material : Aluminum

Finish : Black anodized flanges should be pinned or bonded to the nut to prevent disassembly during operation. Flanges do not have a set screw which could deform a nut and possibly cause binding.



Flange Dimensions					Number	Price \$
O.D.	T	A	BCD	B (Thread)		
1.62	1/4	.177	1.25	5/8-18	9F82 7751	—
2	5/16	.266	1.5	15/16-16	9F82 7752	—
1.25	3/16	0.14	1	9/16-18	9F82 7753	—
30	5.0	3.5	22	M12 x 1.5	9F82 7754	—
40	6.5	3.5	32	M20 x 1.5	9F82 7755	—

* Sizes in mm.