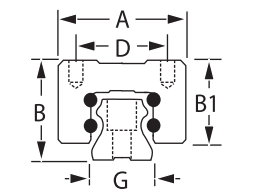


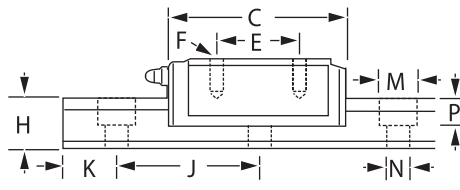
# Precision Guide Blocks & Rails

## Standard Width - Mount Guide Blocks and Rails

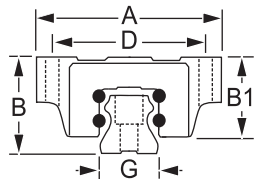
You can install these blocks and rails in any position without affecting load capacity. Maximum temperature is 80° C. **Guide Blocks** - Made of steel and resin with H - NBR rubber seals on both ends to keep lubricants in and dirt out. Ball bearings are steel. Blocks have four mounting holes. **Rails** - Made of hardened and ground steel.



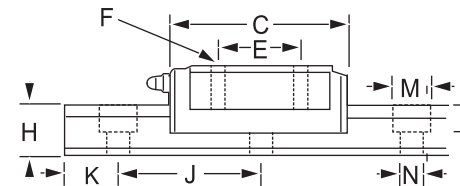
Blind Hole (End View)



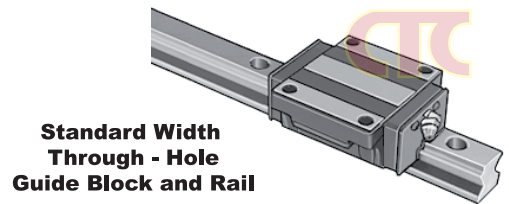
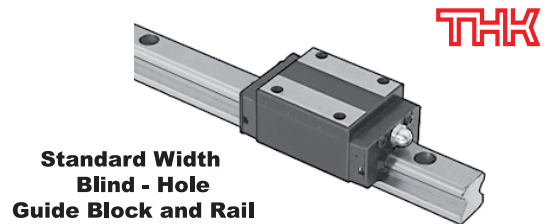
Blind Hole (Side View)



Through Hole (End View)



Through Hole (Side View)



## Standard Width Guide Blocks and Rails (Metric Dimension)

Dynamic Load Cap.,KN	Guide Block Dimensions (mm)							Rail Dimensions (mm)							Available Lengths	Guide Blocks		Rails/10mm	
	A	B	B1	C	D	E	Mtg. Holes, Dia. X Dp. F	G	H	J	K	M	N	P		Number	Price ₪	Number	Price ₪

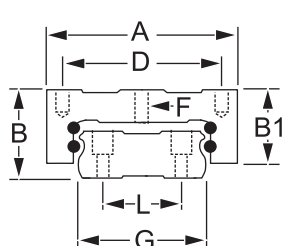
### Threaded Blind - Hole Guide Blocks and Rails

8.32	34	28	23.3	57	26	26	M4 X 5	15	15	60	20	7.5	4.5	5.3	220, 460, 820, 1600	6G09 0012	—	6G09 0001	—
13.79	44	30	26	74	32	36	M5 X 6	20	18	60	20	9.5	6	8.5	280, 460, 820, 1240	6G09 0014	—	6G09 0043	—
19.89	48	40	34.5	83	35	35	M6 X 8	23	22	60	20	11	7	9	280, 460, 820, 1240	6G09 0016	—	6G09 0053	—
27.99	60	45	38	98	40	40	M8 X 10	28	26	80	20	14	9	12	280, 440, 1000, 1240	6G09 0018	—	6G09 0063	—
37.29	70	55	47.5	110	50	50	M8 X 12	34	29	80	20	14	9	12	280, 440, 1000, 1240	6G09 0021	—	6G09 0073	—
59.99	86	70	60	139	60	60	M10 X 17	38	45	105	23	20	14	17	570, 885, 1200, 1620	6G09 0023	—	6G09 0083	—

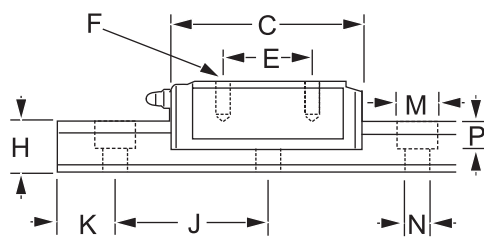
### Unthreaded Through - Hole Guide Blocks and Rails

8.32	47	24	19.3	57	38	30	4.5 X 7	15	15	60	20	7.5	4.5	5.3	220, 460, 820, 1600	6G09 0011	—	6G09 0002	—
13.79	63	30	26	74	53	40	6 X 10	20	18	60	20	9.5	6	8.5	280, 460, 820, 1240	6G09 0013	—	6G09 0044	—
19.89	70	36	30.5	83	57	45	7 X 10	23	22	60	20	11	7	9	280, 460, 820, 1240	6G09 0015	—	6G09 0045	—
27.99	90	42	35	98	72	52	9 X 10	28	26	80	20	14	9	12	280, 440, 1000, 1240	6G09 0017	—	6G09 0046	—
37.29	100	48	40.5	110	82	62	9 X 13	34	29	80	20	14	9	12	280, 440, 1000, 1240	6G09 0019	—	6G09 0047	—

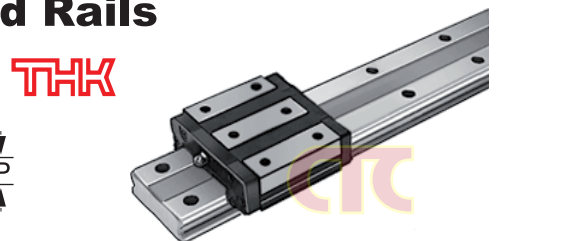
## Extra Width - Mount Guide Blocks and Rails



End view



Side View



Extra Width Blind - Hole Guide Block and Rail

### Metric Dimension

Dynamic Load Cap.,KN	Guide Block Dimensions (mm)							Rail Dimensions (mm)							Available Lengths	Guide Block		Rails	
	A	B	B1	C	D	E	Mtg. Holes, Dia. X Dp. F	G	H	J	K	L	M	N		P	Number	Price ₪	Number

### Threaded Blind - Hole Guide Blocks and Rails

3.29	30	12	10	37	21	12	M3 X 3.5	18	6.5	40	15	—	8	4.5	4.5	70, 110, 150, 190	9H20 2508	—	8H20 2508	—
5.38	40	14	12	45.5	28	15	M3 X 4	24	7.2	40	15	—	7.5	4.5	5.3	70, 110, 150, 190	9H20 2509	—	8H20 2509	—
4.31	50	17	14.5	51	29	15	M4 X 5	33	9	40	15	18	7.5	4.5	5.3	110, 190, 310, 470	9H20 2510	—	8H20 2510	—
6.18	54	21	18	59	31	19	M5 X 6	37	11	50	15	22	7.5	4.5	5.3	130, 230, 380, 480	9H20 2511	—	8H20 2511	—

(Continued on following page)