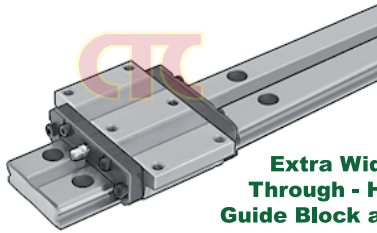


# Precision Guide Blocks

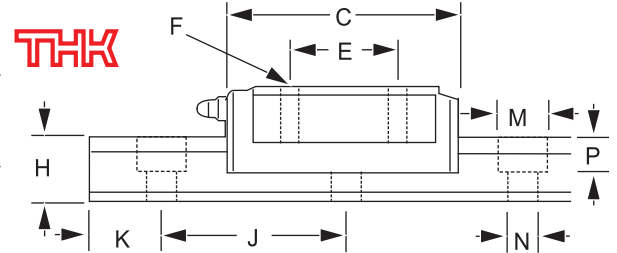
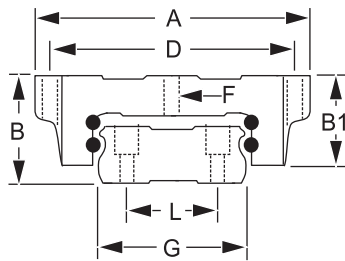
## Extra width - Mount guide blocks and Rails

(Continued from previous page)

**Guide blocks** - Made of steel and resin. Blocks have a lower profile to offer more stability and to better handle off - centered loads. Polyurethane end seals keep lubricants in and dirt out. Ball bearings are steel.



**Extra Width Through - Hole Guide Block and Rail**



### Metric Dimension

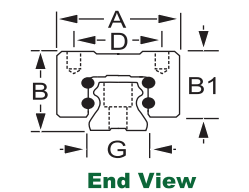
Dynamic Load Cap.,KN	Guide Block Dimensions (mm)							Rail Dimensions (mm)								Available Lengths	Guide Blocks		Rails/10mm	
	A	B	B1	C	D	E	Mtg. Holes, Dia. X Dp. F	G	H	J	K	L	M	N	P		Number	Price ₪	Number	Price ₪

#### Threaded Through - Hole Guide Blocks and Rails

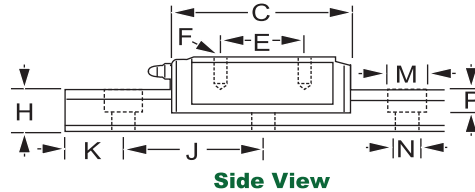
969	60	17	14.5	50.8	53	26	M4 X 6	33	9	40	15	18	7.5	4.5	5.3	110, 190, 310, 550	6H82 8025	—	6H82 8011	—
1,389	68	21	18	58.8	60	29	M5 X 8	37	11	50	15	22	7.5	4.5	5.3	130, 380, 580, 780	6H82 8035	—	6H82 8012	—
2,585	80	27	24	72.8	70	40	M6 X 10	42	15	60	20	24	7.5	4.5	5.3	160, 280, 460, 820	6H82 8045	—	6H82 8013	—
6,115	120	35	31	106.6	107	60	M8 X 14	69	19	80	20	40	11	7	9	280, 440, 760, 1240	6H82 8055	—	6H82 8014	—
11,285	162	50	46.6	140.5	144	80	M10 X 18	90	24	80	20	60	14	9	12	280, 440, 760, 1000	6H82 8065	—	6H82 8015	—

## Extended - Life Universal - Mount Guide Blocks and Rails

An internal resin "Cage" that separates the ball bearings gives these blocks at least two times the service life of a conventional ball bearing guide block. The cage minimizes noise reduces heat buildup and friction and eliminates ball collision to extend the life of the bearing. "Universal mount" means you can install these blocks and rails in any position without affecting load capacity. Maximum temperature is 80 – C.

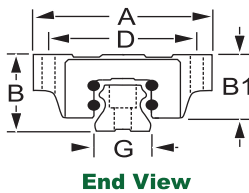
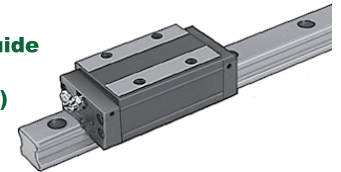


**End View**

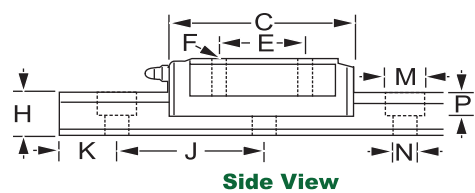


**Side View**

**THK**  
Threaded - Hole Guide Block and Rail (Sold Separately)

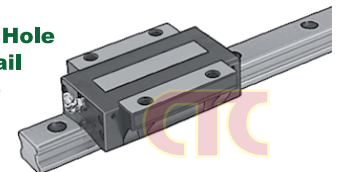


**End View**



**Side View**

**THK**  
Threaded Through - Hole Guide Block and Rail (Sold Separately)



### Metric Dimension

Dynamic Load Cap.,KN	Guide Block Dimensions (mm)							Rail Dimensions (mm)								Available Lengths	Guide Blocks		Rails/10mm	
	A	B	B1	C	D	E	Mtg. Holes, Dia. X Dp. F	G	H	J	K	N	P	Number	Price ₪		Number	Price ₪		

#### Guide Blocks and Rails - Threaded Hole Guide Blocks and Rails

3,192	34	28	25	64.4	26	26	M4 X 5	15	13	60	7.5	4.5	5.3	220, 460, 640, 820	6N88 1011	—	6N88 1033	—
5,013	44	30	25.4	79	32	36	M5 X 5	20	16.5	60	9.5	6	8.5	280, 460, 820, 1000	6N88 1012	—	6N88 1043	—
7,126	48	40	34.2	92	35	35	M6 X 8	23	20	60	11	7	9	280, 460, 820, 1240	6N88 1013	—	6N88 1053	—
10,071	60	45	38	106	40	40	M8 X 10	28	23	80	14	9	12	440, 760, 1000, 1640	6N88 1014	—	6N88 1063	—
14,005	70	55	47.5	122	50	50	M8 X 12	34	26	80	14	9	12	440, 760, 1000, 1640	6N88 1015	—	6N88 1073	—
18,614	86	70	61.1	140	60	60	M10 X 17	45	32	105	20	14	17	570, 885, 1200, 1620	6N88 1016	—	6N88 1083	—

#### Threaded Through - Hole Guide Blocks and Rails

3,192	47	24	21	64.4	38	30	M5 x 4.4	15	13	60	7.5	4.5	5.3	220, 460, 640, 820	6N88 1021	—	7N88 1033	—
5,013	63	30	25.4	79	53	40	M6 x 5.4	20	16.5	60	9.5	6	8.5	280, 460, 820, 1000	6N88 1022	—	7N88 1043	—
7,126	70	36	30.2	92	57	45	M8 x 6.8	23	20	60	11	7	9	280, 460, 820, 1240	6N88 1023	—	7N88 1053	—
10,071	90	42	35	106	72	52	M10 x 8.5	28	23	80	14	9	12	440, 760, 1000, 1640	6N88 1024	—	7N88 1063	—
14,005	100	48	40.5	122	82	62	M10 x 8.5	34	26	80	14	9	12	440, 760, 1000, 1640	6N88 1025	—	7N88 1073	—
18,614	120	60	51.1	140	100	80	M12 x 10.5	45	32	105	20	14	17	570, 885, 1200, 1620	6N88 1026	—	7N88 1083	—

(Continued on following page)