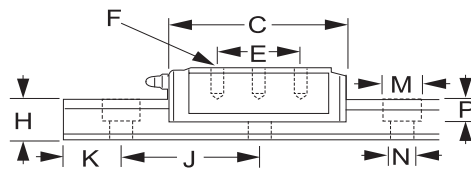
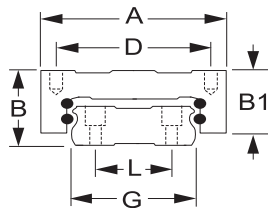


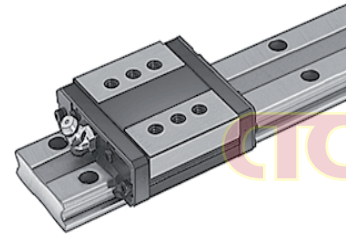
# Guide Blocks, Rails & Linear Rails

## Extended - Mount Guide Blocks and Rails

(Continued from previous page)



THK



Extra Width Threaded - Hole Guide Block and Rail (Sold Separately)

**Guide Blocks** - Made of steel and resin with H - NBR rubber end seals to keep lubricants in and dirt out. Guide blocks have four mounting holes. Extra width guide blocks have a lower profile that offers more stability and better handles off-centered loads. **Rails** - Made of hardened and ground steel.

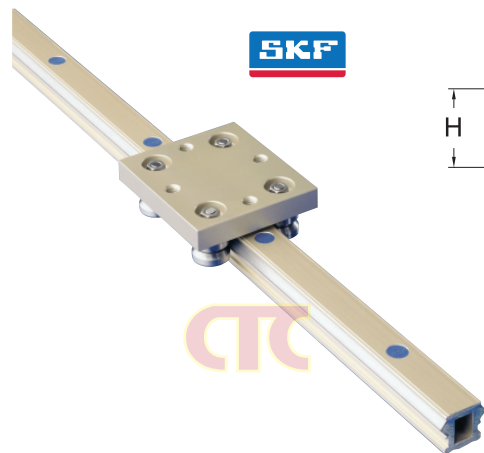
### Metric Dimension

Dynamic Load Cap.,KN	Guide Block Dimensions (mm)							Rail Dimensions (mm)						Available Lengths	Guide Blocks		Rails/10mm	
	A	B	B1	C	D	E	Mtg. Holes, Dia. X Dp. F	G	H	J	M	N	P		Number	Price ₪	Number	Price ₪

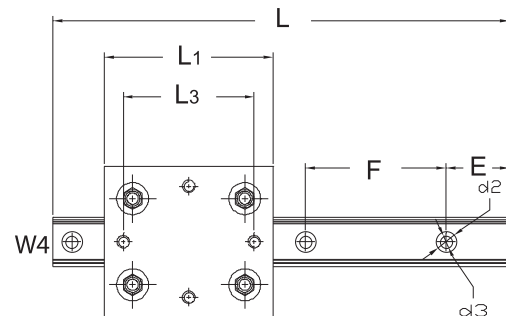
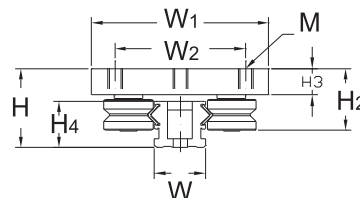
#### Extra Width Guide Blocks and Rails - Threaded - Hole Guide Blocks and Rails

1,852	54	21	17.7	59	31	19	M5 X 6	37	11	50	7.5	4.5	5.3	130, 230, 480, 780	6H82 9025	—	6H82 9011	—
3,596	62	27	23.5	73	46	32	M6 X 6	42	15	60	7.5	4.5	5.3	160, 280, 460, 820	6H82 9035	—	6H82 9012	—
7,980	100	35	31	107	76	50	M8 X 8	69	19	80	11	7	9	280, 440, 760, 1000	6H82 9045	—	6H82 9013	—
15,781	130	50	46	141	100	65	M10 X 15	90	24	80	14	9	12	280, 440, 760, 1000	6H82 9055	—	6H82 9014	—

## Speed - Roll Rails



SKF



Speed - Roll offers a lightweight speed design for applications requiring smooth and accurate operation. The cam follower design offers moderate load carrying capacity along with rotational stiffness. Each carriage is constructed from anodized aluminum fitted with four cam followers.

### Speed - Roll Rails (Metric Dimension)

Ht. H4 (mm)	L (mm)	W4 (B)	W (B1)	E (C)	F (D)	d2 (E)	d3 (F)	Number	Price ₪
17.00	1000.00	24.9	18.00	31.25	62.50	9.50	5.50	0A57 6348	—
17.00	2000.00	24.9	18.00	31.25	62.50	9.50	5.50	0A57 6355	—
21.00	1000.00	29.9	23.00	62.50	125.00	11.00	6.50	0A57 6363	—
21.00	3000.00	29.9	23.00	62.50	125.00	11.00	6.50	0A57 6389	—
29.00	1000.00	42.9	36.00	125.00	250.00	20.00	11.00	0A57 6397	—
29.00	3000.00	42.9	36.00	125.00	250.00	20.00	11.00	0A57 6413	—

- ▶ Easy to install.
- ▶ Speed up to 10m/sec.
- ▶ Fully supported rail system.

The Rail is composed of a drawn and anodized aluminum body with hardened steel angled raceways to accept the 90° angle cam followers. Cam followers are lubricated for life.

### Carriages

OAH H (mm)	H3 (mm)	W1 (mm)	W2 (mm)	L1 (mm)	L2 (mm)	L3 (mm)	M (mm)	Load Cap.(Lbs.)		Number	Price ₪
								Top	Side		
25.00	6.05	65.00	50.00	70.00	60.00	45.00	5.00	157	148	0A57 6314	—
35.50	12.10	80.00	59.00	90.00	70.00	60.00	8.00	225	315	0A57 6322	—
54.30	19.40	120.00	90.00	100.00	70.00	65.00	10.00	562	562	0A57 6330	—

#### Note :

Carriages and rails sold separately.