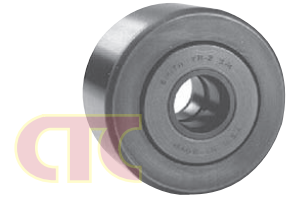
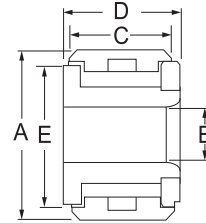


Cam Followers & Precision Linears

Yoke Cam Followers - Inch Sizes

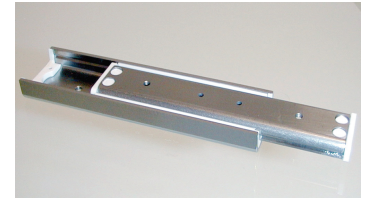
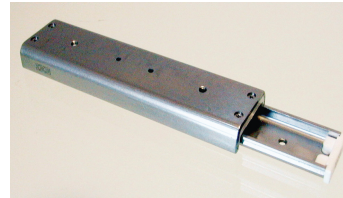
Yoke followers can support heavier loads by the yoke mounting arrangement. The Yoke cam followers are of similar internal construction except an inner race for shaft clevis mounting replaces the threaded stud.



Roller Dia. (In.) A	Bore (In.) B	Roller Width (In.) C	Overall Width (In.) D	Slotted Unsealed			Slotted Sealed			Stainless Steel		
				Dyn. Load Cap.(lbs.)	Number	Price \$	Dyn. Load Cap.(lbs.)	Number	Price \$	Dyn. Load Cap.(lbs.)	Number	Price \$
3/4"	0.2500	0.5000	0.5625	1540	3N67 0685	—	1540	3N67 0750	—	1328	8N07 1780	—
1"	0.3120	0.6250	0.6875	2190	3N67 0693	—	2190	3N67 0768	—	1780	8N07 1806	—
1 1/8"	0.3125	0.6250	0.6875	—	—	—	—	—	—	1780	8N07 1814	—
1 1/4"	0.3750	0.7500	0.8125	3390	3N67 0701	—	3390	3N67 0776	—	3144	8N07 1822	—
1 1/2"	0.4375	0.8750	0.9375	4450	3N67 0719	—	4450	3N67 0784	—	3872	8N07 1848	—
1 3/4"	0.5000	1.0000	1.0625	6070	3N67 0727	—	6070	3N67 0792	—	5180	8N07 1855	—
2"	0.6250	1.2500	1.3125	8010	3N67 0735	—	8010	3N67 0800	—	6472	8N07 1863	—
2 1/4"	0.6250	1.2500	1.3125	8010	3N67 0743	—	8010	3N67 0818	—	—	—	—

Low - Profile Precision Linear Ball Slides (Metric Size)

Non - Recirculating ball type low profile, Low friction and low maintenance. Recommended for light to moderate loads and high speed and acceleration application. A Special synthetic resin retainer is used to hold the balls and eliminate ball contact noise. Extremely smooth and light movement without stick slips is obtained in a limited stroke length.

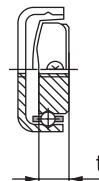
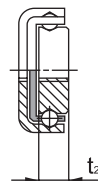
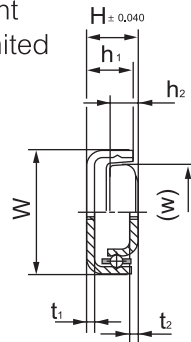
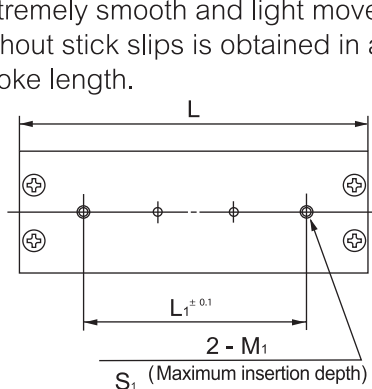


Top View

Underside View

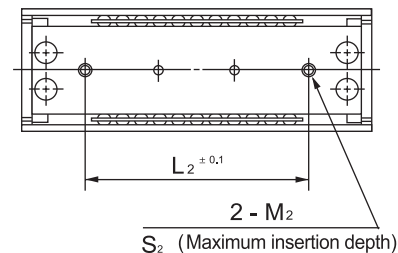
IKO

Unit (mm)



BSP 7

BSP 10



Mass (Ref.) g	Nominal Dimensions (mm)				Mounting Dimensions of Table (mm)					Mounting Dimensions of Bed (mm)			Basic Dynamic Load Rating C N	Number	Price \$
	W	H	L	Maximum Stroke Length	L ₁	M ₁	Maximum Insertion Depth S ₁	h ₁	t ₁	w	L ₂	M ₂			
2.1 2.8 4.2 5.6	7	4	15 20 30 40	9 9 18 23	5 10 20 30	M2	1	3.4	0.9	3.6	5 10 20 30	M2	93.3 134 170 203	2B57 0660 * 2B57 0661 2B57 0662 2B57 0663 *	— — — —
6.2 8.8 11.3			25 35 45	15 26 38	15 25 35						15 25 35		340 398 453	2B57 0664 2B57 0665 2B57 0666	— — —
11 14.7 18.4 22.1			30 40 50 60	22 24 32 40	14 24 34 40						14 24 34 40		395 550 644 732	2B57 0667 2B57 0668 2B57 0669 2B57 0670	— — — —
23.7 35.7 47.6			40 60 80	22 34 53	24 40 50						24 40 50		726 998 1180	2B57 0671 2B57 0672 2B57 0673	— — —
37.6 52.9	25	10	50 70	26 40	34 45	M3	3.5	9	1.6	20.5	34 45	M3	866 1120	2B57 0674 2B57 0675	— —

* 2B57 0660 to 2B57 0663 can not be mounted from inside of the table and bed.