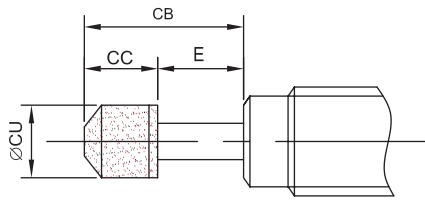
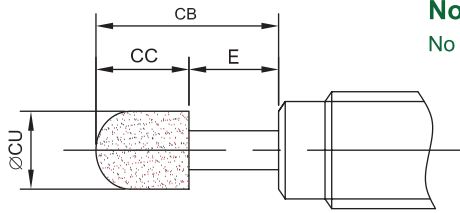


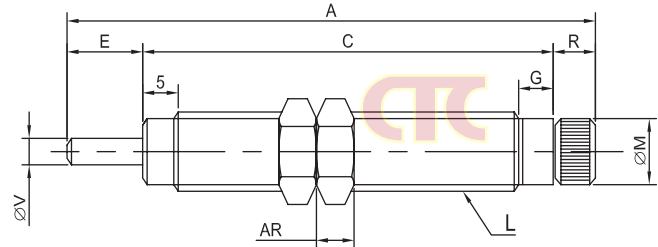
## Adjustable Shock Absorbers



A Knob lets you adjust these to control how much deceleration and E Force cushion they provide. All have a steel body with black-oxide finish and chrome-plated steel piston rod, Unless noted. Optimum for high-speed impacts. Standard-Temperature range is -10° to 80° C. Effectively absorbs shocks and noises; Shortens tact times; improves machining accuracy; prevents damage. Multi orifice type. Best suited to high impact speed because of self-compensation.



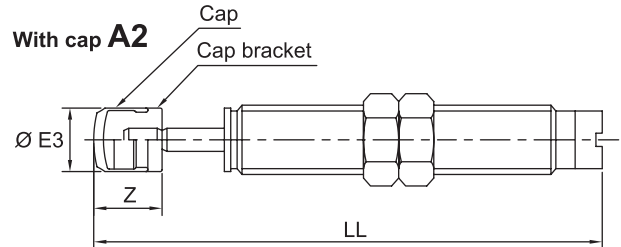
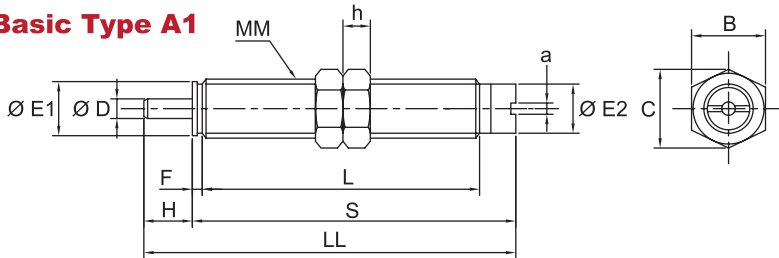
**Nose mounting**  
No rod end cap



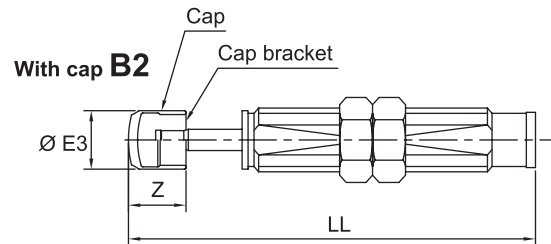
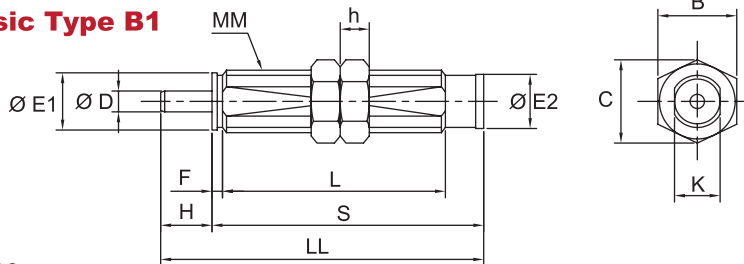
A	C	Stroke E	G	L	M	R	V	AR	CB	CC	CU	Multi Orifice Type			Single Orifice Type		
												Max. Energy Abs. (J)	Number	Price ₪	Max. Energy Abs. (J)	Number	Price ₪
68	55	8	4	M10 X 1	9	5	3	3	16	8	8	1.5	8K34 9032	—	1.5	8K34 9037	—
78	61	10	10	M12 X 1	11	7	3	4	20	10	10	3.0	8K34 9033	—	3.0	8K34 9038	—
101.5	79.5	15	10	M16 X 1.5	13	7	5	7	30.5	15.5	13	9.8	8K34 9034	—	—	—	—
115	88	20	10	M18 X 1.5	15	7	5	8	35.5	15.5	15	14.7	8K34 9035	—	—	—	—
120	91	22	10	M20 X 1.5	17	7	5	10	40	18	16	29	8K34 9036	—	24.5	8K34 9042	—

## Black Oxide Body Series RB

### Basic Type A1



### Basic Type B1



A1-A2



Dimensions										With Cap			Hexagon Nut			Max. Energy Abs. (J)	Max. Allowable Thrust (N)	Basic Type		With Cap	
D	E1	E2	F	H	K	L	LL	MM	S	E3	LL	Z	B	C	h			Number	Price ₪	Number	Price ₪
2.8	6.8	6.8	2.4	5	1.4	33.4	45.8	M8 X 1.0	40.8	6.8	54.3	8.5	12	13.9	4	0.98	245	2K00 0805	—	5K00 0805	—
2.8	6.8	6.8	2.4	6	1.4	33.4	46.8	M8 X 1.0	40.8	6.8	55.3	8.5	12	13.9	4	2.94	245	2K00 0806	—	5K00 0806	—
3	8.8	8.6	2.7	6	1.4	39	52.7	M10 X 1.0	46.7	8.7	62.7	10	14	16.2	4	3.92	422	2K00 1006	—	5K00 1006	—
3	8.8	8.6	2.7	7	1.4	39	53.7	M10 X 1.0	46.7	8.7	63.7	10	14	16.2	4	5.88	422	2K00 1007	—	5K00 1007	—

B1-B2

Dimensions										With Cap			Hexagon Nut			Max. Energy Abs. (J)	Max. Allowable Thrust (N)	Basic Type		With Cap	
D	E1	E2	F	H	a	L	LL	MM	S	E3	LL	Z	B	C	h			Number	Price ₪	Number	Price ₪
5	12.2	12	3.5	11	12	58.8	78.3	M14 X 1.5	67.3	12	91.8	13.5	19	21.9	6	14.7	814	2K00 9210	—	5K00 9214	—
5	12.2	12	3.5	12	12	58.8	79.3	M14 X 1.5	67.3	12	92.8	13.5	19	21.9	6	19.6	814	2K00 9211	—	5K00 9215	—
6	18.2	18	4	15	18	62.2	88.2	M20 X 1.5	73.2	18	105.2	17	27	31.2	6	58.8	1961	2K00 9212	—	5K00 9216	—
8	25.2	25	5	25	25	86	124	M27 X 1.5	99	25	147	23	36	41.6	6	174	2942	2K00 9213	—	5K00 9217	—