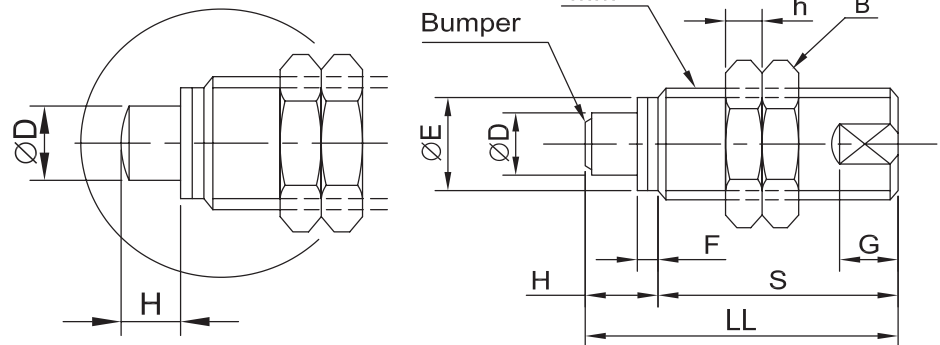


Shock Absorbers

Short Type Shock Absorber



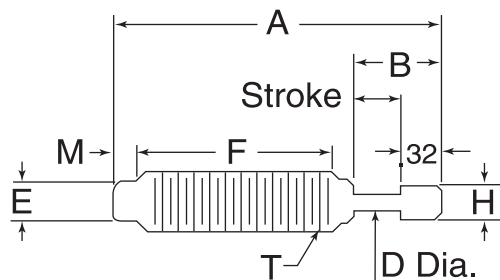
Absorbs shock and noise. Automatic adjustment to the most appropriate absorption performance. Specially designed orifice can absorb energy comprehensively and most appropriately in many different applications. These range from high speed low load to low speed high load; Without requiring additional adjustment of the shock absorber.



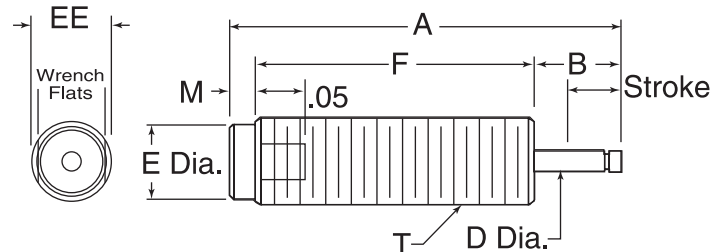
Shock Absorber								Hexagon Nut			Max. Energy Abs. (J)	Basic Type		With Cap		
D	E	F	H	K	G	LL	S	MM	B	C		h	Number	Price ₪	Number	Price ₪
6	14.2	3.5	4	14	7	31	27	M16 X 1.5	22	25.4	6	0.2	7D94 1604	—	7D34 1604	—
10	18.2	4	7	48	9	44.5	37.5	M20 X 1.5	27	31.2	6	1.2	7D94 2007	—	7D34 2007	—
12	23.2	4	8	23	10	52	44	M25 X 1.5	32	37	6	2.0	7D94 2508	—	7D34 2508	—
16	28.2	5	8.5	28	12	61.5	53	M30 X 1.5	41	47.3	6	3.4	7D94 3009	—	7D34 3009	—

Self - Compensating

Small size allows for high energy absorption in confined spaces. The self - compensating design accommodates a variety of load conditions. Threaded outer bodies. Temperature range 0-65° C. Not Compatible with petroleum based fluids. Silicone type oil.



1A10 1051-1A10 1053



1A10 1052, 1A10 1054, 1A10 1058



Inch Size

Number	Price ₪	Mfr's	Stroke	A	B	D	E	F	H	M	EE	T	Effective Weight lbs.	Energy / Cycle	Energy / Hr. In Lbs./Hr.
1A10 1052	—	MC-10L	.20	1.52	.40	.08	.25	.93	—	.19	—	M8 x 0.75	.75-6.0	4	35,000
1A10 1051 **	—	MC-25L	.26	2.27	.57	.13	.33	1.30	.30	.19	—	3/8-32	1.5-5.0	20	120,000
1A10 1053 **	—	MC-25H	.26	2.27	.57	.13	.33	1.30	.30	.20	—	3/8-32	10-30	20	120,000
1A10 1054	—	MC-150	.50	3.41	.69	.19	.46	2.44	—	.28	.500	9/16-18	2-22	150	300,000
1A10 1055	—	MC-150H2	.50	3.41	.69	.19	.46	2.44	—	.28	.500	9/16-18	150-450	150	300,000
1A10 1056	—	MC-225H	.50	3.81	.69	.25	.66	2.84	—	.28	.687	3/4-16	50-500	225	400,000
1A10 1057	—	MC-600	1.00	5.58	1.24	.31	.87	4.06	—	.28	.875	1-12	20-300	600	600,000
1A10 1058	—	MC-600H2	1.00	5.58	1.24	.31	.87	4.06	—	.28	.875	1-12	880-5,000	600	600,000

** Includes nylon button