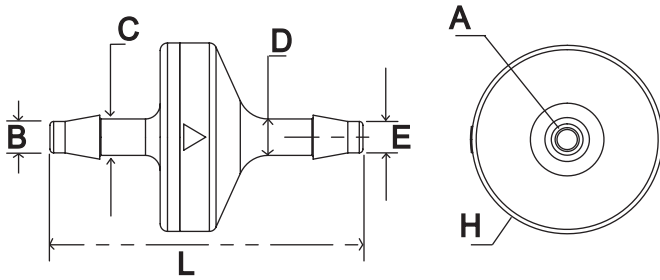


Standard Check Valves



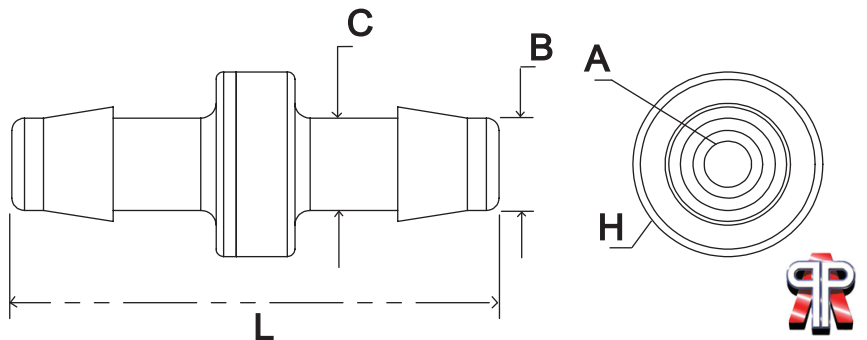
Specifications Molded with “Premium Grade” technology. Barbs molded without parting line. Free floating diaphragms.

Application range : 1 to 150 psi. Standard, Reducing & Enlarging. Threaded/Barbed combination.



| Number | Price ฿ | Size | Diaphragm/Body | A | B | C | H | L |
|-----------|------------|---------------|--------------------------|-------|-------|-------|------|---------|
| 9P64 2247 | — | 1/8" X 1/8" | Neoprene / Nylon | 0.080 | 0.125 | 0.175 | 0.75 | 1 9/32 |
| 9P64 2248 | — | 1/8" X 1/8" | Viton / Kynar | 0.080 | 0.125 | 0.175 | 0.75 | 1 9/32 |
| 9P64 2249 | — | 3/16" X 3/16" | Neoprene / Polycarbonate | 0.125 | 0.188 | 0.250 | 0.75 | 1 11/16 |
| 9P64 2250 | — | 3/16" X 3/16" | Viton / Polypropylene | 0.125 | 0.188 | 0.250 | 0.75 | 1 11/16 |
| 9P64 2251 | — | 1/4" X 1/4" | Silicone / Polycarbonate | 0.125 | 0.250 | 0.345 | 0.75 | 1 21/32 |
| 9P64 2252 | — | 1/4" X 1/4" | Viton / Polypropylene | 0.125 | 0.250 | 0.345 | 0.75 | 1 21/32 |
| 9P64 2253 | — | 3/8" X 3/8" | Neoprene / Polycarbonate | 0.188 | 0.375 | 0.465 | 0.75 | 1 29/32 |
| 9P64 2254 | — | 3/8" X 3/8" | Silicone / Polycarbonate | 0.188 | 0.375 | 0.465 | 0.75 | 1 29/32 |

Barbed In - Line Filters



Specifications Molded with “Premium Grade” technology. Stainless steel mesh. Barbs molded without parting line. HDPE, From 45 to 130 microns.

Body Materials Nylon, Polypropylene, Polycarbonate, Filters, 90-130 Micron HDPE, 100 Mesh stainless steel, 200 Mesh stainless steel, 45-90 Micron HDPE.

HDPE In - Line Filter

| Number | Price ฿ | Size | Filter / Body | Filter Size | A | B | C | H | L |
|-----------|------------|-------------|---------------------------------|-----------------|-------|-------|-------|------|---------|
| 0A25 1774 | — | 1/4" X 1/4" | HDPE 4903 / Clear polycarbonate | 45 - 90 Micron | 0.125 | 0.250 | 0.350 | 0.75 | 1 5/8 |
| 0A25 1775 | — | 1/4" X 1/4" | HDPE 4913 / Clear polycarbonate | 90 - 130 Micron | 0.125 | 0.250 | 0.350 | 0.75 | 1 5/8 |
| 0A37 1776 | — | 3/8" X 3/8" | HDPE 4903 / Clear polycarbonate | 45 - 90 Micron | 0.188 | 0.375 | 0.465 | 0.75 | 1 29/32 |
| 0A37 1777 | — | 3/8" X 3/8" | HDPE 4913 / Clear polycarbonate | 90 - 130 Micron | 0.188 | 0.375 | 0.465 | 0.75 | 1 29/32 |

Stainless In - Line Filter

| Number | Price ฿ | Size | Filter / Body | Filter Size | A | B | C | H | L |
|-----------|------------|-------------|-------------------------------------|-------------|-------|-------|-------|------|---------|
| 0A25 1321 | — | 1/4" X 1/4" | Stainless steel 100 / Polycarbonate | 100 Mesh | 0.125 | 0.250 | 0.350 | 0.75 | 1 5/8 |
| 0A25 1322 | — | 1/4" X 1/4" | Stainless steel 200 / Polycarbonate | 200 Mesh | 0.125 | 0.250 | 0.350 | 0.75 | 1 5/8 |
| 0A37 1323 | — | 3/8" X 3/8" | Stainless steel 100 / Polycarbonate | 100 Mesh | 0.188 | 0.375 | 0.465 | 0.75 | 1 29/32 |
| 0A37 1324 | — | 3/8" X 3/8" | Stainless steel 200 / Nylon | 200 Mesh | 0.188 | 0.375 | 0.465 | 0.75 | 1 29/32 |