

# Control Valves

## 4 - Way Toggle Valves

4 - Way valves can supply and exhaust two different outlets and are commonly used with double - acting cylinders. When the toggle is in one position air flows from the inlet to one of the outlets. The second outlet is open to the exhaust port which is vented to atmosphere. Moving the toggle to the opposite position opens the inlet to the second outlet while exhausting the first outlet. 4 - Way toggle valves are spool valves that by movement of the toggle may either be 2 - Position or have a momentary actuation.



**Suitable for :** Air

**Materials :** Brass body, Buna-N seals, stainless steel stem and spring

**Mounting :** 15/32-32 thread. Nuts and lockwashers furnished.

### ► 2 Position Spool Valves

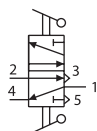


**Input pressure :** 150 psig/10 bar max.

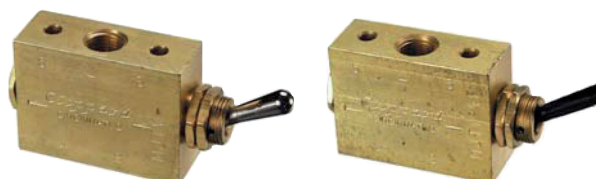
**Air flow :** 6 scfm @ 50 psig; 10 scfm

@ 100 psig; 240 l/min @ 6 bar

**Force for full stem travel :** 12 oz. nominal



### ► Position Spool Valve with 1/8" NPT Inl

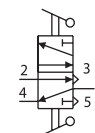


**Input pressure :** 150 psig/10 bar max.

**Air flow :** 6.5 scfm @ 50 psig; 10.5 scfm

@ 100 psig; 250 l/min @ 6 bar

**Force for full stem travel :** 12 oz. nominal



Number	Price ฿	Description
5K94 8501	—	2 Position Spool Valve, NP Brass Toggle, #10-32
5K94 8502	—	2 Position Spool Valve, NP Brass Toggle, M5
5K94 8503	—	2 Position Spool Valve, Plastic Toggle, #10-32
5K94 8504	—	2 Position Spool Valve, Plastic Toggle, M5

Number	Price ฿	Description
9L90 6974	—	2 Position Spool Valve, NP Brass Toggle, 1/8" NPT
9L90 6975	—	2 Position Spool Valve, NP Brass Toggle, G1/8
9L90 6976	—	2 Position Spool Valve, Plastic Toggle, 1/8" NPT
9L90 6977	—	2 Position Spool Valve, Plastic Toggle, G1/8

### ► 2 Position Fully - Ported Spool Valves

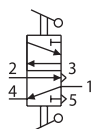


**Input pressure :** 150 psig/10 bar max.

**Air flow :** 6 scfm @ 50 psig; 10 scfm

@ 100 psig; 240 l/min @ 6 bar

**Force for full stem travel :** 16 oz. nominal



### ► J - Series 2 Position Fully - Ported Spool

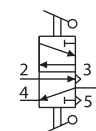


**Input pressure :** 150 psig/10 bar max.

**Air flow :** 6.5 scfm @ 50 psig; 10.5 scfm

@ 100 psig; 250 l/min @ 6 bar

**Force for full stem travel :** 16 oz. nominal



Number	Price ฿	Description
2L30 6974	—	2 Position Spool Valve, NP Brass Toggle, #10-32
2L30 6975	—	2 Position Spool Valve, NP Brass Toggle, M5
2L30 6976	—	2 Position Spool Valve, Plastic Toggle, #10-32
2L30 6977	—	2 Position Spool Valve, Plastic Toggle, M5

Number	Price ฿	Description
3D80 6974	—	2 Position Spool Valve, NP Brass Toggle, 1/8" NPT
3D80 6975	—	2 Position Spool Valve, NP Brass Toggle, G1/8
3D80 6976	—	2 Position Spool Valve, Plastic Toggle, 1/8" NPT
3D80 6977	—	2 Position Spool Valve, Plastic Toggle, G1/8

## 3 Piece Heavy - Duty 316 SS Instrumentation Ball Valves

Cast body CFM8 316 Stainless steel. ISO Mounting pad for automation. Blowout proof stem. Standard port type. In-Line-One way flow style. Teflon® Seal and Seat material. Locking lever with plate handle type. Valve type : Swing out.



End connections : Tube OD X Tube OD.  
Rated 2000 psi WOG @ 21°C.  
316 SS Ball and Stem with PTFE seat.

Pipe Size (In.)	Interchange Guide Swagelok® Mfr's	Number	Price ฿
1/4"	SS-62TS4	8V78 4295	—
1/2"	SS-63TS8	8V78 4311	—
3/4"	SS-63TS12	8V78 4329	—
1"	SS-65TS16	8V78 4337	—