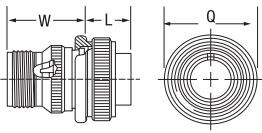
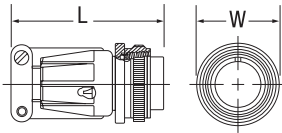


MS/Standard Cylindrical Connectors MIL-DTL-5015 Type

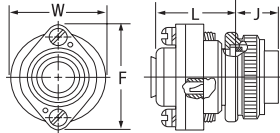
MS3106A Straight Plug



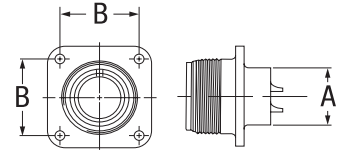
MS3106E/F Straight Plug



MS3106R Straight Plug



MS3102E/R Box Mount Receptacle



Feature

Threaded couplings and single key/keyway shell polarization, representing maximum simplicity in design. Applications include military ground support equipment, ordnance and shipboard installations.

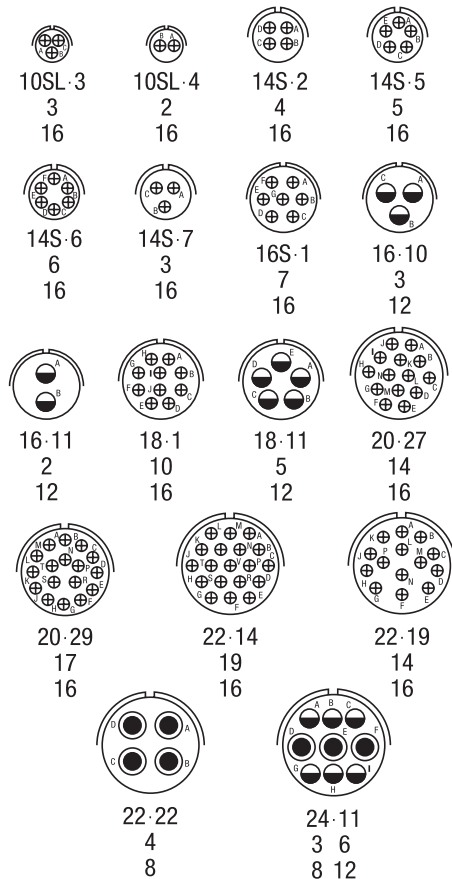
Insert Arrangements

- Medium to heavyweight cylindrical
- Durable, field-proven design
- Resilient inserts
- Solder contacts, sizes 16-0 accepting 22-0 AWG
- Operating voltage : 3000VAC (RMS)
Max. At sea level

MS3106A Series Straight Plugs

Number	Price	Mfr's	Contacts	Insert Arrangements	Dimensions		
					Q	L	W
3G20 5228	—	MS3106A10SL-3S	3	10SL-3	0.531"	0.937"	0.946"
3G20 5229	—	MS3106A10SL-4S	2	10SL-4	0.531"	0.937"	0.946"
3G20 5230	—	MS3106A12S-3S	2	12S-3	0.531"	0.937"	0.945"
3G20 5231	—	MS3106A14S-2P	4	14S-2	0.531"	0.937"	1.123"
3G20 5232	—	MS3106A14S-2S	4	14S-2	0.531"	0.937"	1.123"
3G20 5233	—	MS3106A14S-5S	5	14S-5	0.531"	0.937"	1.123"
3G20 5234	—	MS3106A14S-5P	5	14S-5	0.531"	0.937"	1.123"
3G20 5235	—	MS3106A14S-6S	6	14S-6	0.531"	0.937"	1.123"
3G20 5236	—	MS3106A14S-6P	6	14S-6	0.531"	0.937"	1.123"
3G20 5237	—	MS3106A14S-7P	3	14S-7	0.531"	0.937"	1.123"
3G20 5238	—	MS3106A16S-1P	7	16S-1	0.531"	0.937"	1.250"
3G20 5239	—	MS3106A16S-1S	7	16S-1	0.531"	0.937"	1.250"
3G20 5240	—	MS3106A16S-8P	5	16S-8	0.531"	0.937"	1.250"
3G20 5241	—	MS3106A16-10S	3	16-10	0.719"	1.124"	1.250"
3G20 5242	—	MS3106A18-1S	10	18-1	0.719"	1.219"	1.333"
3G20 5243	—	MS3106A18-1P	10	18-1	0.719"	1.125"	1.333"
3G20 5244	—	MS3106A20-29S	17	20-19	0.719"	1.125"	1.461"
3G20 5245	—	MS3106A22-14P	19	22-14	0.719"	1.219"	1.333"

Insert Arrangement Number of Contacts Contact Size



MS3106E/F Series Straight Plugs

Number	Price	Mfr's	Contacts	Insert Arrangements	Dimensions	
					L	W
8C50 4062	—	MS3106E10SL-3S	3	10SL-3	2.129"	0.946"
8C50 4063	—	MS3106E10SL-4S	2	10SL-4	2.129"	0.946"
8C50 4064	—	MS3106E14S-2S	4	14S-2	2.201"	1.123"
8C50 4065	—	MS3106E14S-6S	6	14S-6	2.201"	1.123"
8C50 4066	—	MS3106E16S-1P	7	16S-1	2.201"	1.250"
8C50 4067	—	MS3106E18-11S	5	18-11	2.596"	1.333"
8C50 4068	—	MS3106F10SL-3S	3	10SL-3	2.129"	0.946"
8C50 4069	—	MS3106F10SL-4S	2	10SL-4	2.129"	0.946"
8C50 4070	—	MS3106F14S-2P	4	14S-2	2.201"	1.123"
8C50 4071	—	MS3106F14S-2S	4	14S-2	2.201"	1.123"
8C50 4072	—	MS3106F14S-5P	5	14S-5	2.201"	1.123"
8C50 4073	—	MS3106F14S-5S	5	14S-5	2.201"	1.123"
8C50 4074	—	MS3106F14S-6P	6	14S-6	2.201"	1.123"
8C50 4075	—	MS3106F14S-6S	6	14S-6	2.201"	1.123"
8C50 4076	—	MS3106F14S-7P	3	14S-7	2.201"	1.123"
8C50 4077	—	MS3106F14S-7S	3	14S-7	2.201"	1.123"
8C50 4078	—	MS3106F16S-1P	7	16S-1	2.201"	1.250"
8C50 4079	—	MS3106F16S-1S	7	16S-1	2.201"	1.250"
8C50 4080	—	MS3106F16-10P	3	16-10	2.524"	1.250"
8C50 4081	—	MS3106F16-10S	3	16-10	2.524"	1.250"
8C50 4082	—	MS3106F18-1P	10	18-1	2.596"	1.333"
8C50 4083	—	MS3106F18-1S	10	18-1	2.596"	1.333"
8C50 4084	—	MS3106F20-27P	14	20-27	2.654"	1.461"
8C50 4085	—	MS3106F20-27S	14	20-27	2.654"	1.461"
8C50 4086	—	MS3106F20-29P	17	20-29	2.654"	1.461"
8C50 4087	—	MS3106F20-29S	17	20-29	2.654"	1.461"

MS3106R Series Straight Plugs

Number	Price	Mfr's	Contacts	Insert Arrangem.	Dimensions			
					L	W	F	J
3H40 5390	—	MS3106R10SL-3S	3	10SL-3	1.057"	0.946"	1.120"	0.531"
3H40 5379	—	MS3106R-10SL-4S	3	10SL-4	1.057"	0.946"	1.120"	0.531"
3H40 5388	—	MS3106R-18-1S	10	18-1	1.212"	1.333"	1.557"	0.719"
3H40 5394	—	MS3106R24-11S	3/#8, 6/#12	24-11	1.291"	1.715"	1.994"	0.719"

(Continued on following page)