

# Cable Ties & Wiring Duct

## Dome - Top® Barb TY Cable Ties



Dome-Top head features unique patented design with round, smooth edges. Stainless steel locking barb provides consistent performance and reliability.

Infinitely adjustable for tight bundles throughout its entire bundle range. High strength and low thread force.

Constructed of durable Nylon 6.6. Color : Natural. UL Listed, UL Recognized.

Number	Price ฿	Mfr's	Length (In.)	Width (In.)	Max. Bundle Dia. (In.)	Min. Loop Tensile Strength (lbs.)	Pkg. of
7F90 9340	---	BT1M-C	4.0	0.095	0.9	18	100
7F90 9350	---	BT1M-M	4.0	0.095	0.9	18	1000
7F90 1110	---	BT1.5M-C	6.3	0.095	1.5	18	100
7F90 1300	---	BT1.5M-M	6.3	0.095	1.5	18	1000
7F90 1120	---	BT2M-C	7.9	0.095	2	18	100
7F90 1310	---	BT2M-M	7.9	0.095	2	18	1000
7F90 1130	---	BT4M-C	14.2	0.095	4	18	100
7F90 1330	---	BT4M-M	14.2	0.095	4	18	1000
7F90 9360	---	BT1.5I-C	6.1	0.141	1.5	40	100
7F90 9370	---	BT1.5I-M	6.1	0.141	1.5	40	1000
7F90 9380	---	BT2I-C	8.0	0.141	2	40	100
7F90 9390	---	BT2I-M	8.0	0.141	2	40	1000
7F90 9400	---	BT3I-C	11.3	0.141	3	40	100
7F90 9410	---	BT3I-M	11.3	0.141	3	40	1000
7F90 9420	---	BT4I-C	14.3	0.141	4	40	100
7F90 9430	---	BT4I-M	14.3	0.141	4	40	1000
7F90 9440	---	BT2S-C	8.0	0.185	2	50	100
7F90 9450	---	BT2S-M	8.0	0.185	2	50	1000
7F90 9460	---	BT3S-C	12.0	0.185	3	50	100
7F90 9470	---	BT3S-M	12.0	0.185	3	50	1000
7F90 9480	---	BT4S-C	15.1	0.185	4	50	100
7F90 9490	---	BT4S-M	15.1	0.185	4	50	1000
7F90 1210	---	BT2LH-L	8.7	0.275	2	120	50
7F90 1420	---	BT2LH-TL	8.7	0.275	2	120	250
7F90 1220	---	BT3LH-L	11.8	0.275	3	120	50
7F90 1430	---	BT3LH-TL	11.8	0.275	3	120	250
7F90 1230	---	BT4LH-L	14.9	0.275	4	50	50
7F90 1440	---	BT4LH-TL	14.9	0.275	4	50	250
7F90 1450	---	BT5LH-C	18.1	0.275	5	120	100
7F90 1250	---	BT6LH-L	21.2	0.275	6	120	50
7F90 1460	---	BT6LH-C	21.2	0.275	6	120	100
7F90 1260	---	BT7LH-L	24.4	0.275	7	120	50
7F90 1470	---	BT7LH-C	24.4	0.275	7	120	100
7F90 1270	---	BT8LH-L	27.5	0.275	8	120	50
7F90 1480	---	BT8LH-C	27.5	0.275	8	120	100

## Dome - Top® Barb TY Clamp Ties

Used to secure a bundle of wires to another surface such as a control panel, wall or ceiling. Allows for bundling before or after screwing clamp in place.

Stainless steel locking barb provides consistent performance and reliability.

Constructed of durable Nylon 6.6. Color : Natural. Also available in weather-resistant and heat-stabilized black nylon; go online or call. UL Listed, UL Recognized.

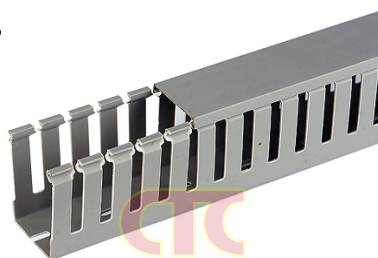


Number	Price ฿	Pkg. of	Mfr's	Length (In.)	Width (In.)	Max. Bundle Dia. (In.)	Min. Loop Tensile Strength (lbs.)	Screw Size
6H58 6340	---	1000	BC1M-S4-M	4.6	0.095	0.9	18	#4
6H58 6320	---	1000	BC1.5I-S8-M	6.6	0.141	1.5	40	#8
6H58 6390	---	500	BC2S-S10-D	8.5	0.185	2	50	#10
6H58 6430	---	50	BC4LH-S25-L	15.5	0.275	4	120	1/4

## Wiring Duct (Open Solt)

Material : High impact, self-extinguishing, warp-proof 94V-0 PVC. Color : Grey. Maximum service temperature: 85°C. Test to UL file E97527 up to 50°C.

These devices are for routing of wires within devices in factory installations where the suitability of use will be determined by UL during the end use investigation.



Number	Price ฿	Mfr's	Size mm. W x H
0A00 0094	---	G-02-01	15 X 25
0A00 0095	---	G-02-14	20 X 20
0A00 0096	---	G-02-02	25 X 25
0A00 0097	---	G-02-03	25 X 45
0A00 0098	---	G-02-04	33 X 33
0A00 0099	---	G-02-05	33 X 45
0A00 0100	---	G-02-06	45 X 45
0A00 0101	---	G-02-07	50 X 50
0A00 0102	---	G-02-08	65 X 45
0A00 0103	---	G-02-09	33 X 65
0A00 0104	---	G-02-10	25 X 65
0A00 0105	---	G-02-11	45 X 65
0A00 0106	---	G-02-12	60 X 60