

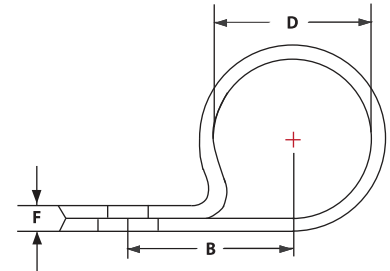
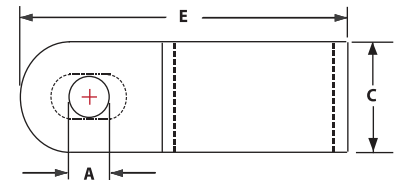
Cable Clamp



Designed to hold cables, tubes and components in domestic appliance, electronics and electric apparatus generally. Interior edges are radiused to protect cable insulation. To apply, just clamp down on loosen cables and screw it to chassis. Black color available.

Material

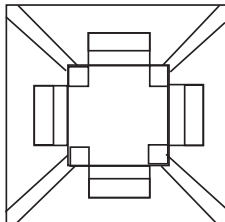
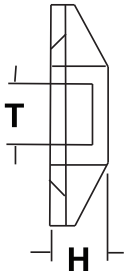
UL Approved Nylon 66, 94V-2.



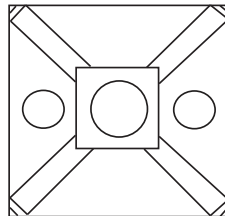
Number	Price ₪	Mfr's	A	B	C	D	E	F	Qty.
31E2 1100	—	UC-0.5	4.6	10.5	9.6	4.8	19.8	1.4	100
31E2 1101	—	UC-2	4.6	15.2	12.0	9.5	24.0	1.5	100
31E2 1102	—	UC-4	4.6	18.2	12.0	15.8	34.3	1.5	100
31E2 1103	—	UC-6	4.6	22.0	12.0	25.4	43.0	1.8	100
31E2 1104	—	UC-7	4.6	26.2	12.0	31.8	46.2	1.8	100
31E2 1105	—	UC-9	4.6	30.0	12.0	36.7	50.0	1.8	100

Self Adhesive Tie Mount

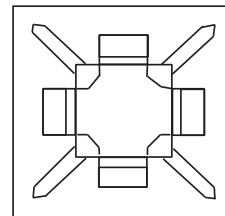
Designed to support light weight wire bundles when properly applied on any clean, smooth, grease-free surface. For heavy support. mounting hole is provided for screws. To apply, simply peel off backing paper and apply mount to surface. After that, cable ties can be inserted to secure wire bundles. Black color available



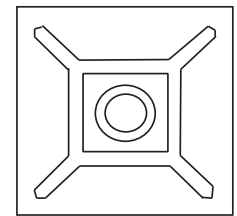
HC-100



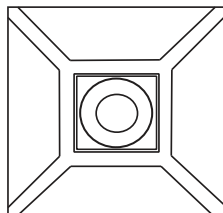
HC-101S



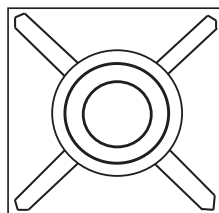
HC-101



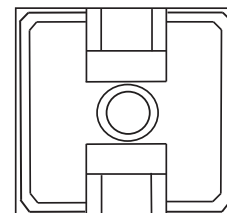
HC-102



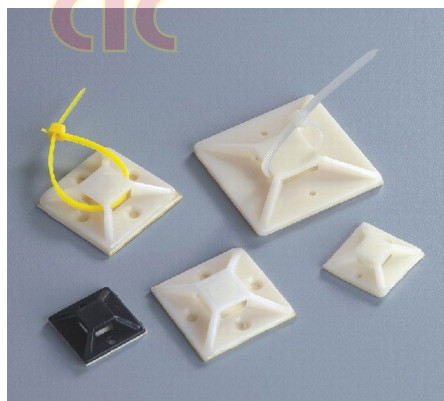
HC-102



HC-19R, 26R



HC-18T



Material UL approved Nylon 66, 94V-2 (Backed with adhesive tape)

Number	Price ₪	Mfr's	L	W	H Without Tape	Mounting Hole	T	Qty.
12H1 0391	—	HC-100-S4	12.5	12.5	3.2	1.0	3.2	100
12H1 0392	—	HC-101S-S2	19.5	19.5	3.9	3.2	4.6	100
12H1 0393	—	HC-101-S	19.5	19.5	3.9	3.2	4.6	100
12H1 0394	—	HC-102	28.6	28.6	5.3	5.0	5.5	100
12H1 0395	—	HC-25	26.1	26.1	6.0	4.3	8.0	100
12H1 0396	—	HC-19R	18.9	18.9	4.6	4.8	4.2	100
12H1 0397	—	HC-26R	26.3	26.3	6.0	5.0	5.6	100
12H1 0398	—	HC-18T	19.0	19.0	5.0	4.4	4.1	100