

Mechanics Vise

Rigid and robust, the body and sliding jaw are cast from close grained grey iron which is CNC manufactured on all friction surfaces for a smooth reliable action. The jaws, handle and main screw are steel, the latter having a two-start rolled acme thread to speed the jaws from fully closed to fully open with a minimum of winding.



Without Swivel Base

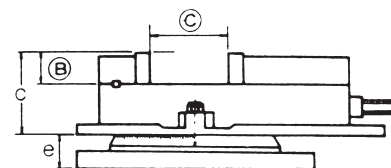
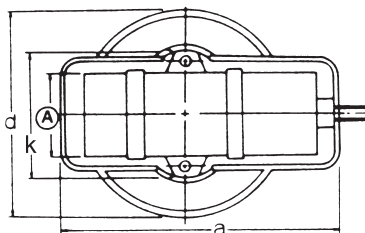
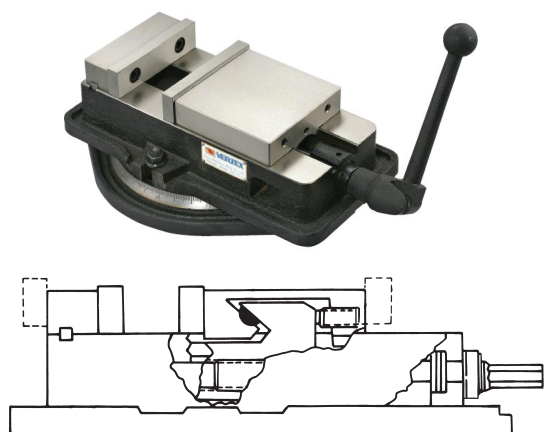
| Number | Price ฿ | Mfr's | Description |
|-----------|------------|-------|-------------------------------------|
| 7344 T200 | — | T1 | 3" (75mm) without Swivel Base |
| 7345 T200 | — | T3 | 4" (100mm) without Swivel Base |
| 7346 T200 | — | T3VS | 4" (100mm) without Vice+Swivel Base |
| 7347 T200 | — | T5 | 5" (125mm) without Swivel Base |

With Anvil, Swivel Base

| Number | Price ฿ | Mfr's | Description |
|-----------|------------|-----------|--|
| 9840 T200 | — | 10507771 | 4" Pro Entry (100mm) without Swivel Base |
| 9841 T200 | — | T41211000 | 1 TON-E, 100mm without Swivel Base |

Angle - Fixed Milling Vise

Use highest quality ductile Iron 80000 PSI for minimum bending. The enclosed lead screw and sliding surface are harden and ground. Highest clamping power. It's very accurate and durable. This Vise is so designed that the horizontal force generated by tightening the handle pushes the semi-sphere within the movable jaw and thus thrusts the movable jaw downward. Four setting positions of the jaw plates are available, widening the jaw plates opening. The new VD675,VA-8L have two major improvements : a wide opening jaw and a new stationary jaw that features an integral key larger fasteners which reduce deflection by 50%.

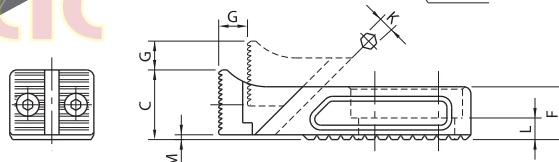
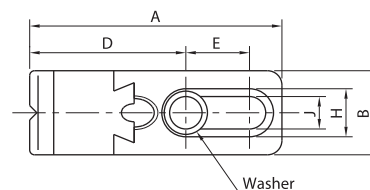


| Number | Price ฿ | Mfr's | A | B | C | a | d | Gross Weight | Meas. CFT |
|-----------|------------|-------|-----|----|-----|-----|-----|--------------|-----------|
| 4268 8H11 | — | VA-4 | 102 | 36 | 103 | 325 | 243 | (C) 20 | 0.5 |
| 4269 8H11 | — | VA-5 | 131 | 36 | 110 | 357 | 278 | (C) 30 | 0.9 |
| 4270 8H11 | — | VA-6 | 152 | 46 | 142 | 418 | 328 | (C) 42 | 1.5 |
| 4271 8H11 | — | VA-8 | 200 | 62 | 197 | 548 | 416 | (w) 80 | 2.7 |

Adjustable Side Clamps

The tall jaws offer larger clamping surface. The clamping surface is serrated for greater clamping strength. The jaws move downward and forward as it is engaged, forcing the work piece against the supports and stops.

Allows for quick removal and insertion of parts. The body and jaws are made from SAE-4140 alloy steel, heat treated with black oxide finish.



| Number | Price ฿ | A | B | C | D | E | F | G | H | J | K | L | M | Clamping Force lbs. | Screw Torque Ft. lbs. |
|-----------|------------|-----|----|------|------|------|----|----|----|-----|---|----|-----|---------------------|-----------------------|
| 189E 5852 | — | 72 | 25 | 19.5 | 45.5 | 16.5 | 16 | 7 | 14 | 8.5 | 4 | 7 | 1.5 | 800 | 4.7 |
| 189E 5853 | — | 105 | 35 | 29 | 65 | 26.5 | 22 | 12 | 20 | 13 | 6 | 9 | 2 | 1663 | 14 |
| 189E 5854 | — | 137 | 40 | 38 | 89.5 | 30 | 30 | 14 | 26 | 17 | 8 | 13 | 2 | 2630 | 23 |