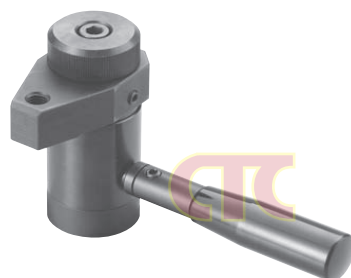
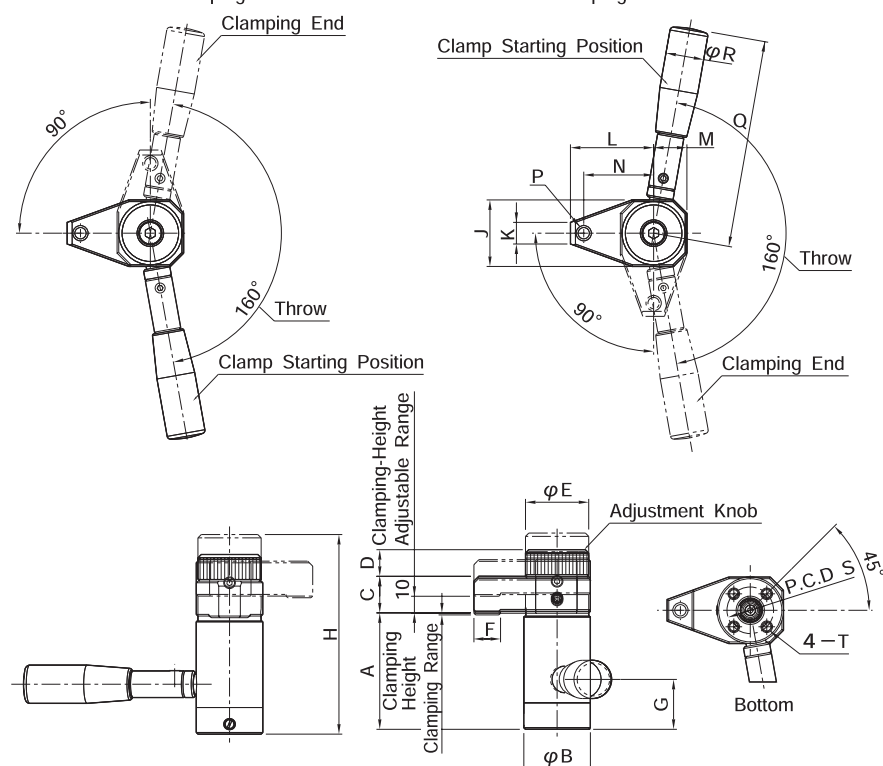


Swing Clamps

Swing Clamp - Fixtureworks

Counterclockwise Clamping

Clockwise Clamping



These Heavy Duty Swing Clamps swing into position then clamp straight down onto the work piece for direct downward pressure. The arm swings completely out of the way to allow for easy loading and unloading of the work piece. Ideal for repetitive clamping operations.

Mounting bases are available that allow top side mounting. The body, cam and handle are made from SAE-4140 alloy steel. The clamp arm is made from SAE-1045 alloy steel. Parts are heat treated with black oxide finish. The handle is made from black plastic.

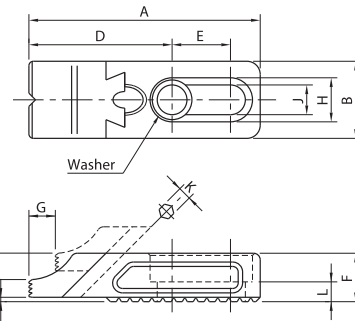
To operate load the work piece, turn the adjustment knob to rotate and lower the clamp arm over the work piece. Rotate the handle to apply full clamping force to the work piece. The 568Q 5246, 568Q 5247 series provide 346 kg of clamping force, the 568Q 5248, 568Q 5249 series provides 600 kg of clamping force. Part numbers ending with R have a clockwise clamping direction, part numbers ending in L have a counter clockwise clamping direction.

Number	Price ฿	Mfr's	Range	Height	B	C	D	E	F	H	J	K	N	P	Q	P.C.D.S	T
568Q 5246	—	QLSWH400R	1.2	70-80	40	22	16	38	16	120	40	13	42	M8X1.25	125	28	M6X1X12D
568Q 5247	—	QLSWH400L	1.2	70-80	40	22	16	38	16	120	40	13	42	M8X1.25	125	28	M6X1X12D
568Q 5248	—	QLSWH500R	1.6	80-90	50	25	20	48	24	137	50	18	48	M12X1.75	160	35	M8X1.25X16D
568Q 5249	—	QLSWH500L	1.6	80-90	50	25	20	48	24	137	50	18	48	M12X1.75	160	35	M8X1.25X16D

Adj. Side Clamp - Low Profile

These adjustable side clamps have a low profile to keep clamp out of the way from machining operation. The clamp moves downward and forward as it is engaged, forcing the work piece against the supports and stops.

Clamping surface is serrated for greater gripping strength. The body and jaw are made from SAE-4140 alloy steel, heat treated with black oxide finish.



Number	Price ฿	Mfr's	A	B	C	D	E	F	G	H	J	K	L	M	Clamping Force lbs.	Screw Torque Ft. lbs.
101B 0801	—	8016	72	25	7.5	45.5	16.5	16	7	14	8.5	4	7	1.5	800	4.7
101B 0802	—	12022	105	35	10	65	26.5	22	12	20	13	6	9	2	1663	14
101B 0803	—	16030	137	40	14	83.5	30	30	14	26	17	8	13	2	2630	23