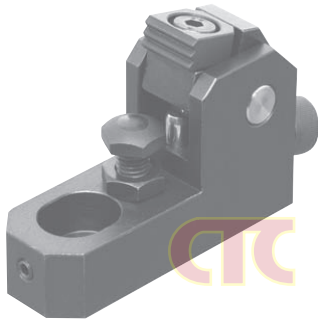


Side Clamp

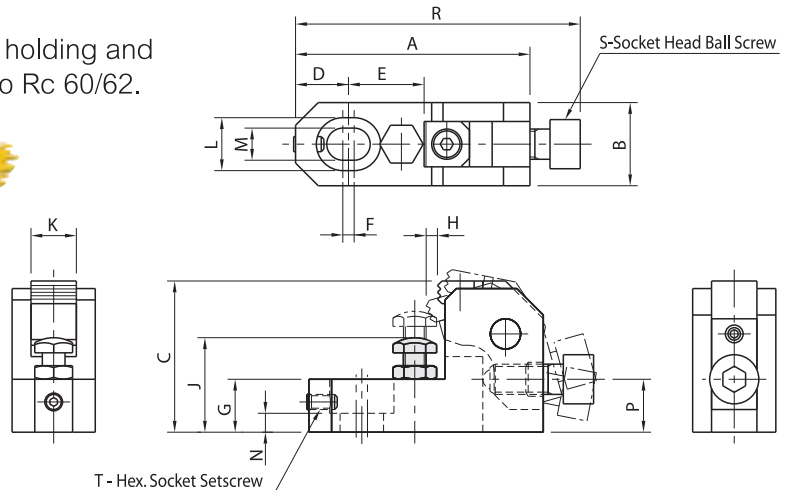
Side Clamps - Center Mount

These side clamps utilize smaller clamping space which allows for greater machine clearance. Mounting screw and work support are under the work piece minimizing clamping space. Tightening the ball screw forces the clamp forward and downward against the work piece supports and stops. The hex socket set screw works to prevent the clamp from sliding back when clamping. The body is made from SAE-1045 alloy steel, heat treated. The arm is made from SAE-1045 alloy steel.

The replaceable serrated jaw provides positive holding and is made from M-2 high speed steel, hardened to Rc 60/62. Parts have a black oxide finish.



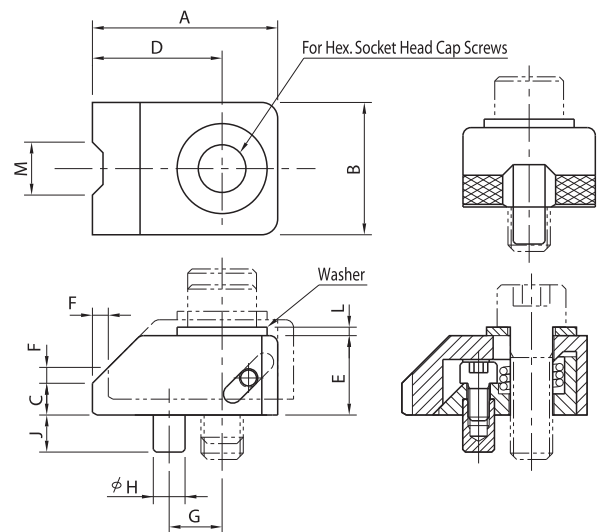
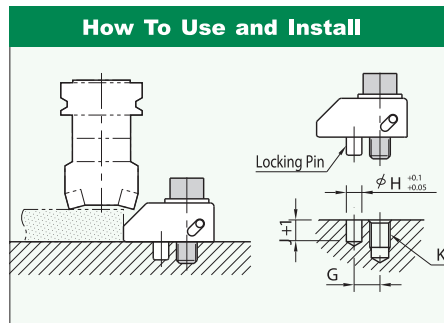
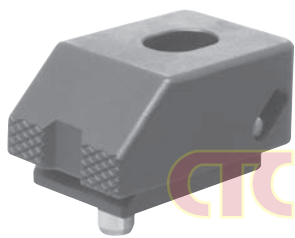
NEW



Metric Size

Number	Price ฿	A	B	C	D	E	F	G	H	J	K	L	M	N	P	R	S	T	Clamping Force lbs.	Screw Torque Ft. lbs.
766E 0852	—	62	22	40	14	20	3	14	3.0	25~32	12	14	8.5	5	14.0	75.5	M8 X 1.25	M4 X 0.7	1348	11
766E 0853	—	78	25	50	18	25	4	18	3.7	32~40	16	17.5	11.0	7	17.5	95.0	M10 X 1.5	M5 X 0.8	2248	22
766E 0854	—	93	32	60	21	30	5	21	4.5	40~48	20	20	13.0	8	21.0	113.0	M12 X 1.75	M6 X 1	3821	47
766E 0855	—	124	38	80	28	40	6	27	6.0	48~63	25	26	17.0	10	28.0	151.0	M16 X 2	M8 X 1.25	5620	95

Toe Clamps - Rear Mount



These toe clamps offer high holding power and low profile. Clamp moves downward and forward as it is engaged, forcing the work piece against the supports and stops.

The low profile clamping surface is serrated for greater gripping strength. Install by drilling and tapping a cap screw hole and locking pin hole. Flat washer included. Made from SAE-1045 alloy steel, heat treated with black oxide finish.

Metric Size

Number	Price ฿	A	B	C	D	E	F	G	(h7) H	J	K	L	M	Clamping Force lbs.	Screw Torque Ft. lbs.
766G 0852	—	35	25	6	24.5	15	3	10	6	7	M8	1.6	10	1570	18
766G 0853	—	43	30	8	29.0	19	4	12	6	7	M10	2.0	11	1910	36
766G 0854	—	54	35	9	37.0	23	5	16	8	10	M12	2.3	12	4490	66
766G 0855	—	65	40	10	45.0	25	6	20	10	10	M16	3.2	14	8990	147